



RUFF TUFF[®]

AMERICA'S FINEST CUSTOM SEAT COVERS | EST.1976

2021-2022 Product Guide

EVERY STITCH SEWN IN THE USA



Location & Contact Info

Ruff Tuff Products, LLC
2252 S Presidents Dr, Suite E
West Valley City, UT 84120

800-453-8830

customerservice@rufftuff.com

www.rufftuff.com



fb.com/RuffTuffOfficial



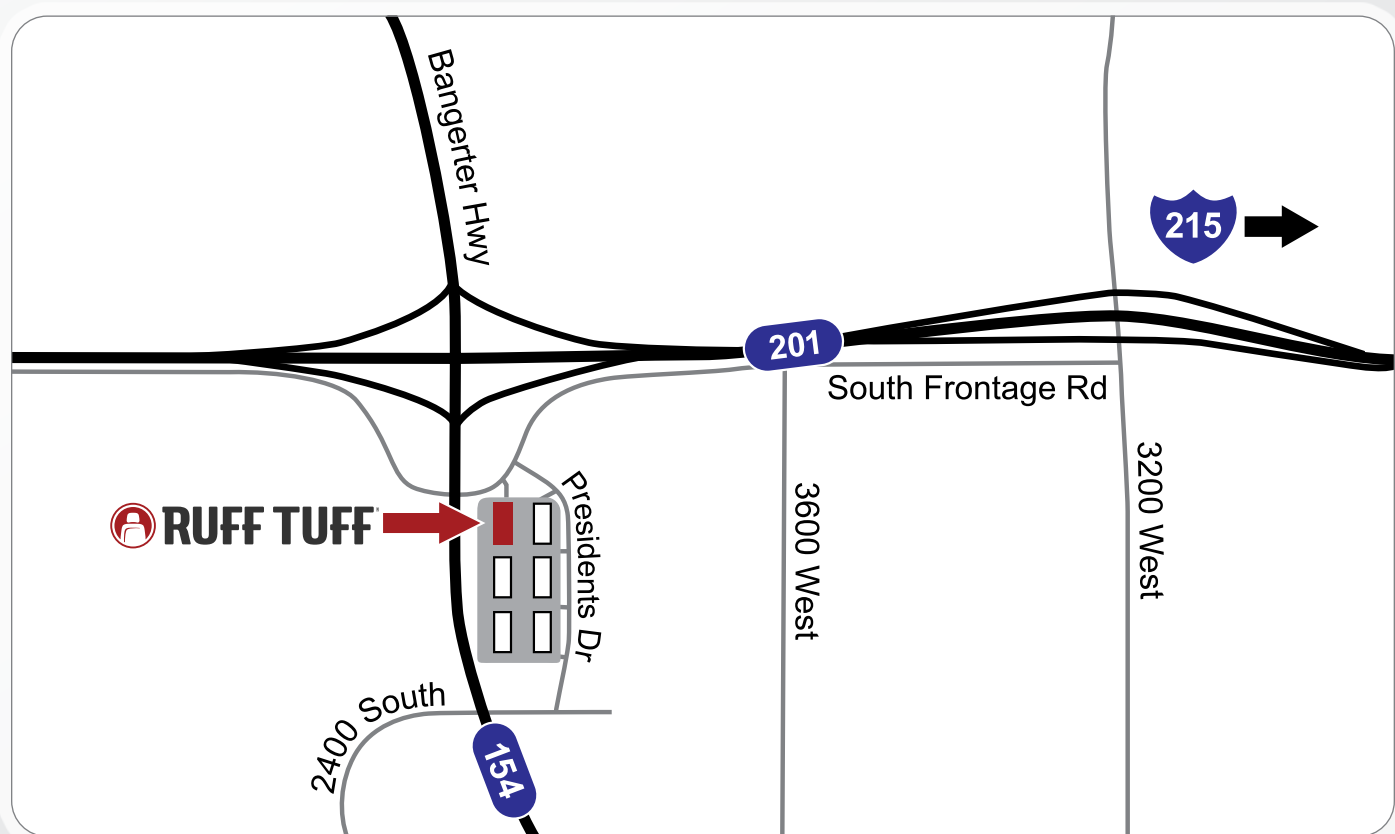
instagram.com/RuffTuffOfficial



youtube.com/RuffTuffProducts



linkedin.com/company/ruff-tuff-products



Contents

About Us.....	2	YOUR SEATS	
What's New?.....	3	Identifying Your Vehicle	48
FABRICS		Types of Seats	49
Exotics.....	4	SEAT FEATURES	
Perforated Sof-Touch	6	Insert & Trim	53
Sof-Touch	8	Foam Backing.....	54
Carbon Fiber	10	Underseat Coverage.....	55
Tactical Camo.....	12	Open Backs	55
Outdoor Camo.....	14	Airbags	56
Lifestyle Camo	16	Seat Controls	57
Dura EZ-Care	18	Courtesy Lights	57
Tuff Suede	20	DVD Systems	57
Velour	22	Heated & Cooled Seats.....	57
Tweed	24	RESELLER	
Saddle Blanket.....	26	Role of Resellers	58
UTV Seat Covers.....	28	Reseller Testimonials	58
Gallery of Popular Combinations	30	Becoming a Reseller	59
OPTIONS		Tips for Resellers.....	60
Diamond Quilting	36	Resellers & Social Media.....	61
Special OPS™ Package	38	RESOURCES	
Pistol Pockets.....	39	What's in the Box?.....	62
Front Pockets.....	40	Installation	63
Rear Pockets.....	40	POLICIES	
Headrest Covers	41	Shipping	64
Armrest Covers	42	Terms of Sale	64
Hard Console Lid Covers	43	Warranty.....	64
ACCESSORIES		Return Policy	64
Coming in 2021: Flex OPS™ Package	44	Fleet Accounts	64
Dash Covers.....	45		
Wheelskins	45		
Sheepskin.....	45		
ORDERING			
How to Order.....	46		
Fabric Swatches.....	47		



About Us

At Ruff Tuff Products, LLC, we've produced **America's Finest Custom Seat Covers™** since 1976. We're family owned and operated, and we sew every stitch in our factory in West Valley City, Utah.

The quality of our product and our long history aren't accidents. We believe in doing things right. We take pride in **custom fit, superior workmanship, and world-class customer service.**

Ruff Tuff has hundreds of authorized resellers across the United States and Canada. Some are large, national retailers; many are smaller, independent shops — and there's always room for more.

We're proud members of **SEMA**, the Specialty Equipment Market Association, and we always have a booth at SEMA's annual show in Las Vegas. It's a great place to connect with new and existing resellers and to stay abreast of developments in the automotive industry.

We're active on social media, especially Facebook, YouTube, and Instagram, where we regularly highlight our resellers.

We support the **Utah Food Bank**, the **Good Samaritan Foundation**, and **Share Parents of Utah** through annual events and donations. We sponsor high school student participation in **DECA** leadership and entrepreneurship events. And we participate in the Festival of Trees fundraiser for **Intermountain Primary Children's Hospital**, a nationally-ranked pediatric care and teaching hospital in Salt Lake City.

We support the families of active duty and fallen military heroes through the **Military Child Education Coalition** and the **Middle East Conflicts Wall Memorial.**



MEMBER



What's New?

In the past two years we've welcomed some exciting partners, added several new patterns and colors, and resumed offering **Diamond Quilting** (see page 36).

We've partnered with entrepreneur and conservationist **Mark Peterson**, star of cable television's **Pursuit Channel**, owner of **Redy Nutrients**, and co-owner of **HuntWise** and **Worldwide Trophy Adventures**. Ruff Tuff Products are available in the **HuntWise app**, an information, shopping, and social media tool for hunters and outdoor enthusiasts.



Goldberg Camo™ pg. 16

We've teamed up with WWE legend, actor, and car enthusiast **Bill Goldberg** to add three exclusive Goldberg Camo™ patterns to our Lifestyle Camo line: **Arctikon™**, **Bone N Stone™**, and **Jackhammer Black™**. These fabrics can be mixed and matched with other Ruff Tuff fabrics for personalized and distinctive seat covers.

MultiCam® Fabrics pg. 12

We've expanded our Tactical Camo line with **MultiCam®** and **MultiCam Black™**. MultiCam® was an official US Army pattern for Afghanistan operations in 2010, and MultiCam Black™ appeals to law enforcement officers with its authoritative presence.



We also added new colors in our **Exotics** (page 4) and **Perforated Sof-Touch** (page 6) lines.



Exotics

Exotics are Ruff Tuff's **premier luxury seat cover material**. **Croc** and **Ostrich** textures simulate premium exotic animal leather for an upscale look that your friends will admire.

The **water-repellent, UV-colorfast** materials withstand everyday wear and tear and clean easily with a damp cloth.

We use fire-retardant foam with scrim backing in the seating area for **optimal fit, durability, and cushioning**.

Exotics can be paired with other materials, except Saddle Blanket, as the insert or trim. When you choose an Exotics material for the insert, consider upgrading to **Diamond Quilting** (page 36) for added elegance and comfort.

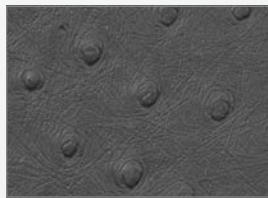


ABOVE
2020 Ford F-150
Insert: Java Croc (E42)
Trim: Black Ostrich (E01)

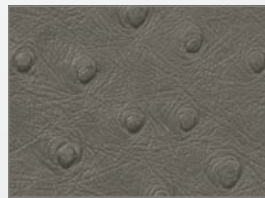
Ostrich



Black (E01)



Charcoal (E26)



Med. Gray (E14)



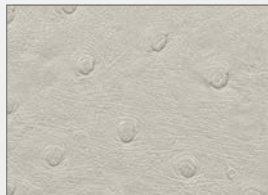
Brown (E04)



Saddle (E02)



Sandstone (E35)

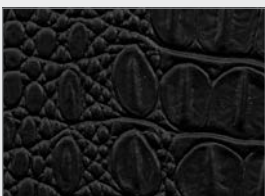


White (E10)

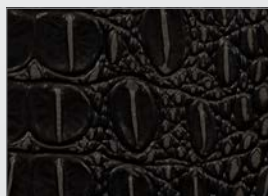


Red (E11)

Croc



Midnight (E43)



Ebony (E40)



Java (E42)



Bone (E41)



Flame (E44)



LEFT

2018 Dodge Ram 1500

Insert: Diamond Quilted White Ostrich (E10)

Trim: Kryptek® Typhon™ (C71)



ABOVE

2020 Ford F-150

Insert: Bone Croc (E41)

Trim: Charcoal Ostrich (E26)



LEFT

2004 Toyota Matrix

Insert: Mossy Oak®

Shadow Grass Blades® (C57)

Trim: Ebony Croc (E40)

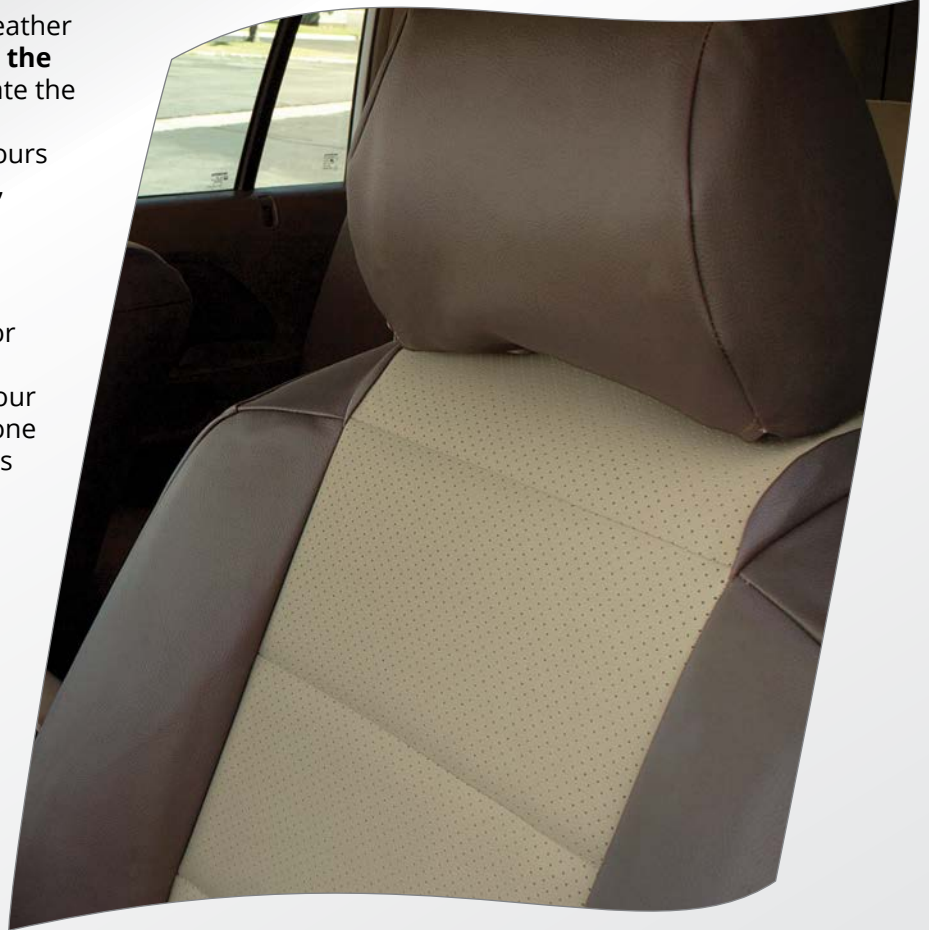


Perforated Sof-Touch

Perforated Sof-Touch is a simulated leather material used for inserts only. **Soft to the touch**, it has a **visible grain** to replicate the **fine leather** found in luxury vehicles. The material molds easily to the contours of the seat, resists abrasion and wear, and has UV-stabilized pigments for true durability.

The fine perforated detailing adds **sophistication** to any vehicle's interior and complements all trim fabrics. It is most often paired with trim made of our unperforated **Sof-Touch** material or one of the **Ostrich** fabrics from our Exotics line, for a **distinctive high-end look**.

Diamond Quilting is available as an option. (See page 36.)



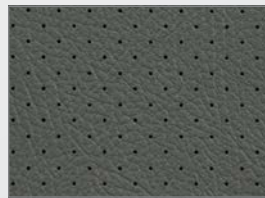
ABOVE
2008 Honda Pilot
Insert: Sandstone Perforated (L35)
Trim: Brown Sof-Touch (S04)



Black (L01)



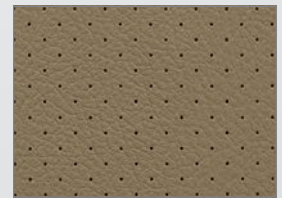
Charcoal Gray (L26)



Medium Gray (L14)



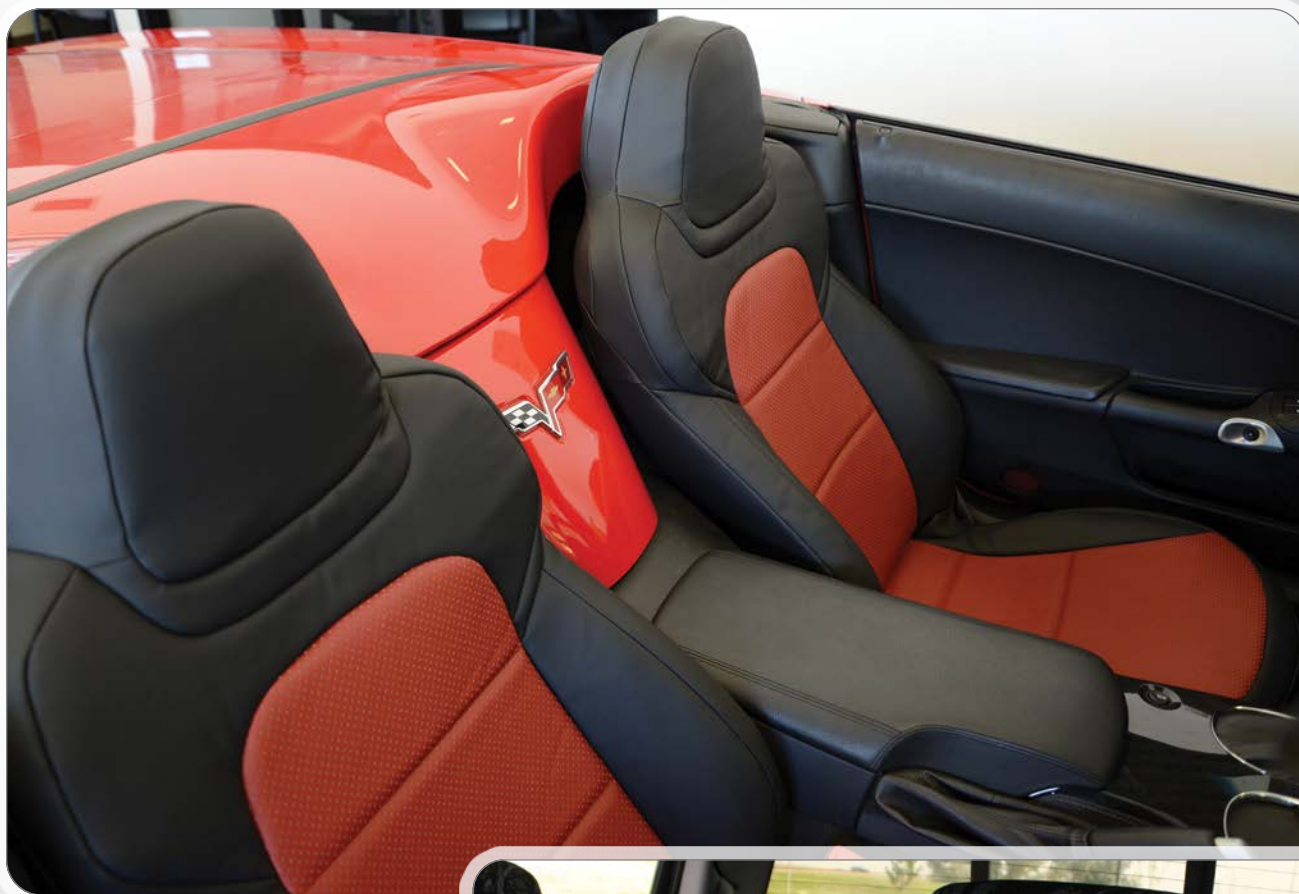
Brown (L04)



Sandstone (L35)



Salsa (L34)



ABOVE
 2013 Chevy Corvette
 Insert: Salsa Perforated (L34)
 Trim: Black Sof-Touch (S01)



RIGHT
 2018 Chevy Silverado 1500
 Insert: Diamond Quilted
 Med. Gray Perforated (L14)
 Trim: Sirphis® Harvest Moon® (C52)



Sof-Touch

Enjoy the comfort and visual appeal of leather at a fraction of the cost with Ruff Tuff's Sof-Touch seat covers. Sof-Touch is often mistaken for genuine leather, due to its **visible grain** and **soft, luxurious feel**.

As a trim fabric Sof-Touch achieves high-end sophistication when paired with a Perforated Sof-Touch insert. Used as an insert, it pairs well with fabrics from our Exotics and Camo lines.

Diamond Quilting is available as an option. (See page 36.)

Sof-Touch seat covers are guaranteed to fit like a glove. They are **water-resistant**, made with UV-stabilized pigments to **resist fading**, and **clean easily** with a soft cloth.



ABOVE

2021 Toyota Tacoma Crew Cab

Insert: Diamond Quilted Black Sof-Touch (S01)

Trim: MultiCam Black™ (C80)



Black (S01)



Charcoal (S26)



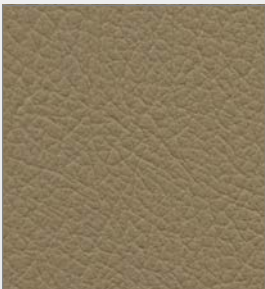
Med. Gray (S14)



Brown (S04)



Caramel (S02)



Sandstone (S35)



Salsa (S34)



LEFT
2011 Ford F-250
Insert: Sandstone Sof-Touch (S35)
Trim: Sandstone Sof-Touch (S35)



ABOVE
2020 Mazda Miata
Insert: Salsa Sof-Touch (S34)
Trim: Salsa Sof-Touch (S34)



LEFT
2007 Ford Ranger
Insert: Med. Gray Sof-Touch (S14)
Trim: Black Sof-Touch (S01)



Carbon Fiber

Carbon Fiber is a vinyl fabric with a **soft texture** and the **high-tech look** of a carbon fiber composite. Combining classic and modern influences, it features a dimensional look and **sophisticated colors**.

Used with other fabrics, for the insert or trim, Carbon Fiber adds a textured element to any Ruff Tuff seat cover. Used for both insert and trim, it modernizes any vehicle's interior.

Our Carbon Fiber seat covers mold easily to the contours of the seat, **resist abrasion** — they're great with pets — are **UV stable**, and **clean easily**. They feature superior fire-retardant foam with scrim backing in the seating area for optimal cushioning and comfort.

Optional **Diamond Quilting** enhances Carbon Fiber's **lively and dynamic colors**. (See page 36.)



ABOVE

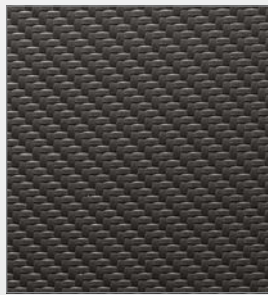
2018 Chevy Silverado 1500

Insert: Black Carbon Fiber (F01)

Trim: Black Carbon Fiber (F01)



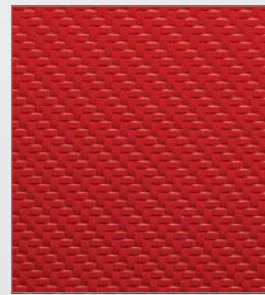
Black (F01)



Flint (F16)



Silver (F13)



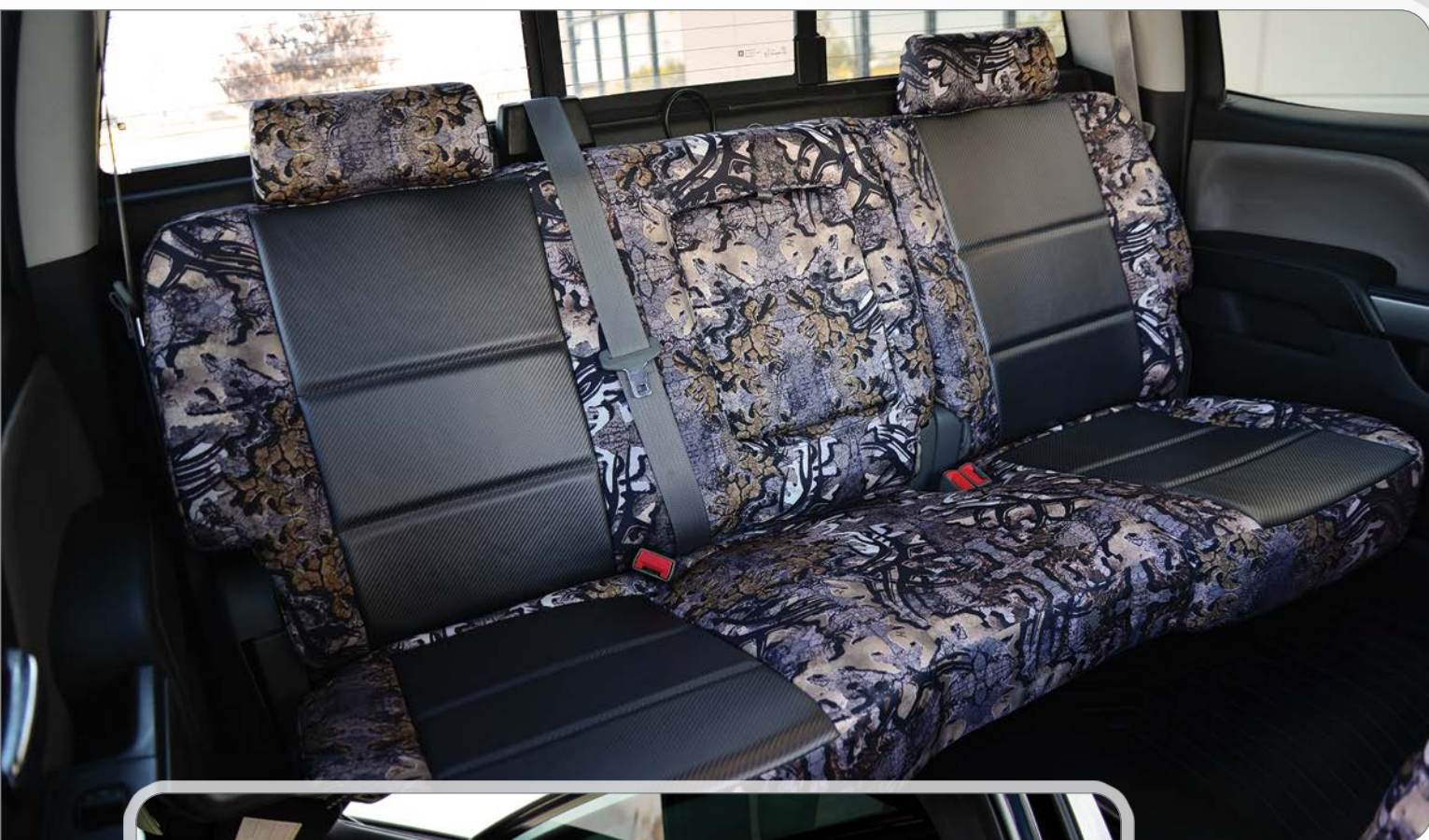
Red (F11)

BELOW

2015 Chevy Silverado 1500

Insert: Flint Carbon Fiber (F16)

Trim: Goldberg Camo™ Bone N Stone™ (C74)



LEFT

2020 Ford F-350

Insert: Diamond Quilted
Red Carbon Fiber
(F11)

Trim: Black Ostrich (E01)



Tactical Camo

The **military look** of our Tactical Camo patterns transforms your vehicle's interior, suggesting **strength and grit**, but above all, serious people doing serious things.

Our camo seat covers are water-, stain-, and abrasion-resistant. They mask grease and **clean easily with a damp cloth**, making them a perfect choice for heavy-duty use in **law enforcement** and outdoor environments such as **construction, mining, and oil drilling**.

They're tough without compromising comfort. Fire-retardant foam with scrim backing in the seating area provides **optimal cushioning, durability, and lasting good looks**.

Choose a Tactical Camo pattern from the top names in camouflage, including Kryptek® and MultiCam®. Many Ruff Tuff customers pair a Tactical Camo insert or trim with fabrics from our **Dura, Carbon Fiber, Sof-Touch, Perforated Sof-Touch**, or **Exotics** lines for a bold, distinctive look.



ABOVE

2010 Ford Edge

Insert: Diamond Quilted

Med. Gray Perforated (L14)

Trim: Kryptek® Raid™ (C72)

Kryptek®



Typhon™ (C71)



Raid™ (C72)



Highlander™ (C70)

MultiCam®

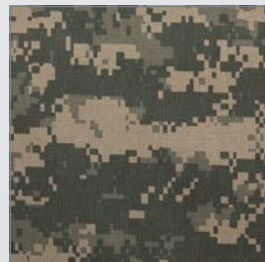


MultiCam Black™ (C80)



MultiCam® (C79)

Digital Camo



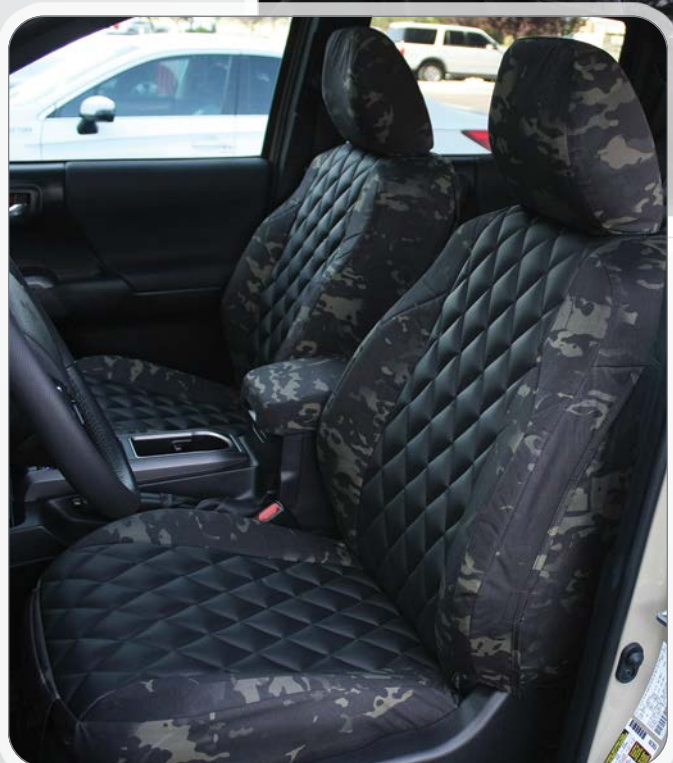
Universal Digital (C78)



LEFT

*2020 Ford F-250 Crew Cab***Insert:** Diamond Quilted Brown Sof-Touch (S04)**Trim:** MultiCam® (C79)

ABOVE

*2018 Ram 1500***Insert:** White Ostrich (E10) - *not shown***Trim:** Kryptek® Typhon™ (C71)*Special OPS™ Package shown*

LEFT

*2021 Toyota Tacoma***Insert:** Diamond Quilted Black Sof-Touch (S01)**Trim:** MultiCam Black™ (C80)

Outdoor Camo

Our Outdoor Camo patterns fit in where you fit in: outdoors. They're great for people who love to **fish, hunt, or explore**. They're tough enough to stand up to children and pets.

They're also a practical way to keep your seats clean. Camo seat covers are water-, stain-, and abrasion-resistant. They **camouflage dirt and grease stains**. Fire-retardant foam with scrim backing in the seating area makes them comfortable too.

Choose an Outdoor Camo pattern from two of the top names in camouflage, Realtree® and Mossy Oak®. These camos pair well with our **Exotics, Dura, Sof-Touch, and Perforated Sof-Touch** lines.



ABOVE

2014 Ford F-150

Insert: Shadow Grass Blades® (C57)

Trim: Shadow Grass Blades® (C57)

Realtree®



Max-5 HD® (C58)



Xtra™ (C63)



Max-4 HD® (C64)

Mossy Oak®



Shadow Grass
Blades® (C57)



Break-Up Country™
(C59)



New Break-Up™
(C67)



ABOVE
 2020 Honda Ridgeline
 Insert: Max-4 HD® (C64)
 Trim: Max-4 HD® (C64)



ABOVE
 2010 Ford F-250
 Insert: Break-Up Country™ (C59)
 Trim: Break-Up Country™ (C59)



Lifestyle Camo

You might choose other camos to blend in. You choose Lifestyle Camo to **stand out**.

Like all our camos, Lifestyle Camo is a great choice with **pets and children**. But it's not just tough, and it doesn't just enhance your vehicle's interior. It **makes a statement** about who you are and how you live your life.

Lifestyle Camo is water-, stain-, and abrasion-resistant and **cleans easily with a damp cloth**. With scrim-backed fire-retardant foam, our Lifestyle Camo seat covers also see to your comfort.

Choose camouflage by Sirphis® (formerly Moon Shine®) or Goldberg Camo™, designed by hall of fame wrestler, actor, and auto enthusiast Bill Goldberg. These patterns pair well with fabrics from our **Exotics, Dura, Sof-Touch**, and **Perforated Sof-Touch** lines.



ABOVE

2020 Ford F-150

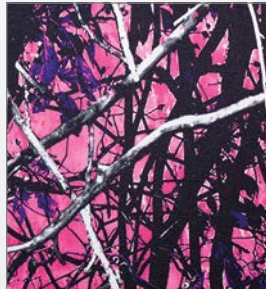
Insert: Jackhammer Black™ (C75)

Trim: Jackhammer Black™ (C75)

Sirphis®



Harvest Moon®
(C52)



Muddy Girl® (C56)



Wildfire® (C55)



Toxic® (C54)



Undertow® (C53)

Goldberg Camo™



Jackhammer Black™
(C75)



Bone N Stone™
(C74)



Arctikon™ (C73)





LEFT
2019 Toyota Tacoma
Insert: Wildfire® (C55)
Trim: Wildfire® (C55)



ABOVE
2016 Mazda CX-9
Insert: Black Dura (D01)
Trim: Arctikon™ (C73)



LEFT
2015 Chevy Silverado 1500
Insert: Flint Carbon Fiber (F16)
Trim: Bone N Stone™ (C74)
Special OPS™ Package shown



Dura EZ-Care

Ruff Tuff Dura EZ-Care seat covers deliver comfort, protection, and value for your car's interior. They're a frequent choice for **fleet and construction vehicles**.

The solid-color material, combined with superior durability and fit, offers a **classic look** that will always be in style.

Dura EZ-Care comes in several popular colors. You can mix and match colors and fabrics to suit your vehicle and tastes. Dura is often paired with fabrics from our **Camo** lines. (Insider tip: it's the same fabric, but with solid colors instead of a camo pattern.)

The fabric **cleans easily with a damp cloth**. It's water- and abrasion-resistant, a popular choice for **children and pets**.



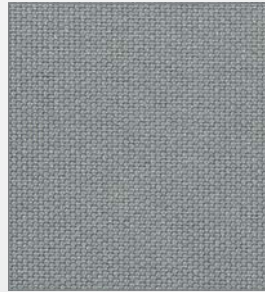
ABOVE
2015 Chevy Silverado
Insert: Sirphis® Toxic® (C54)
Trim: Black Dura (D01)



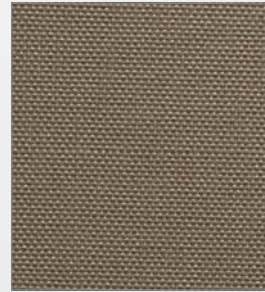
Black (D01)



Charcoal (D26)



Silver Gray (D13)



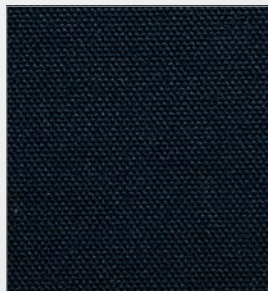
Taupe (D29)



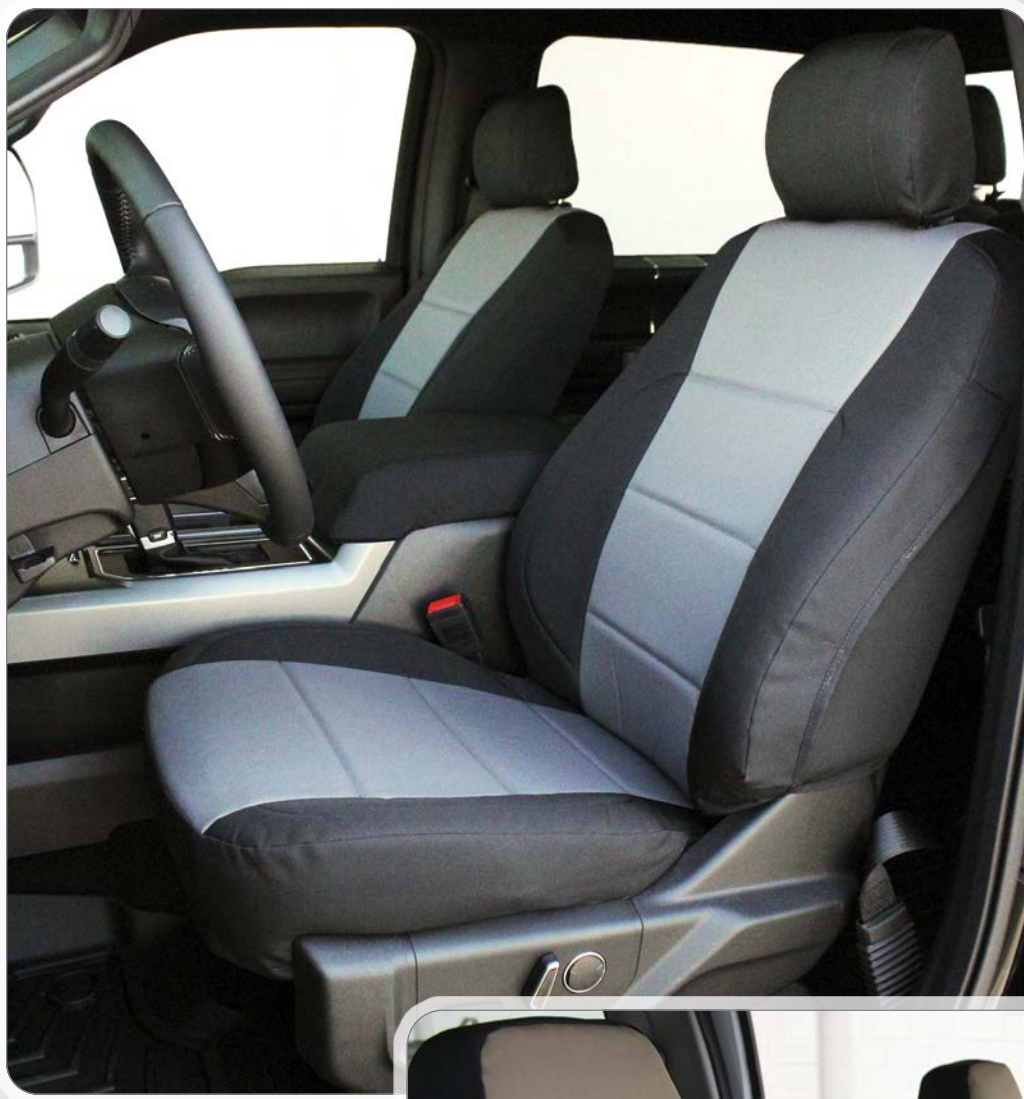
Sand (D36)



Red (D11)



Navy (D03)



ABOVE
2018 Ford F-150
Insert: Silver Gray Dura (D13)
Trim: Charcoal Dura (D26)



RIGHT
2010 Ford F-250
Insert: Sand Dura (D36)
Trim: Black Dura (D01)



Tuff Suede

Tuff Suede is our simulated suede seat cover material. It's a **soft, comfortable, heavyweight** polyester microsuede fabric that is **durable, breathable, and abrasion-resistant**.

Tuff Suede is available in **Outdoor Camo** patterns and **solid colors**. These can be paired with other materials to personalize your vehicle's interior.

These custom seat covers conform to the original seat and feature fire-retardant foam with scrim backing in the seating area, for optimal cushioning. They **clean easily** with a soft cloth, water, and mild detergent.

Optional **Diamond Quilting** (page 36) is available, if you choose a Tuff Suede insert.

Please note: Tuff Suede attracts hair. If you share your seats with a pet, we recommend another fabric.



ABOVE

2005 Toyota Corolla

Insert: Charcoal Tuff Suede (U26)

Trim: Charcoal Sof-Touch (S26)

Solids



Black (U01)



Charcoal (U26)



Tan (U12)

Mossy Oak®

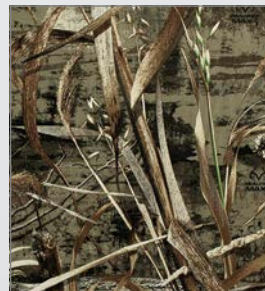


Shadow Grass
Blades® (U57)



Break-Up Country™
(U59)

Realtree®



Max-5 HD® (U58)



Xtra™ (U63)



ABOVE
 2020 *Subaru Impreza*
 Insert: Tan Tuff Suede (U12)
 Trim: Tan Tuff Suede (U12)



LEFT
 2014 *Ford F-150*
 Insert: Black Tuff Suede (U01)
 Trim: Max-5 HD® Tuff Suede (U58)



Velour

Our popular Velour seat covers keep your seats **cool in the summer** and **warm in the winter**. We use some of the **toughest velour materials** available, in solid colors and two-tone stripe combinations. The result is **durable seat covers** which form to the contours of the seat.

Velour is a great choice, if you prefer your custom seat covers to resemble the **original fabric** in many vehicles.

Or you might **cover leather seats** with Velour, because of its superior comfort.

The fabric is **easy to care for** and holds up well over time. It can be cleaned with water and a mild detergent solution.



ABOVE
2015 Honda Odyssey
Insert: Silver Gray Velour (V13)
Trim: Charcoal Gray Solid Velour (V26)



Black (V01)



Charcoal Gray Solid (V26)



Charcoal Gray Stripe (V25)



Silver Gray (V13)



Navy (V03)



Toast Solid (V24)



Toast Stripe (V23)



Tan (V12)



ABOVE
2011 Mazda CX-9
Insert: Silver Gray Velour (V13)
Trim: Black Velour (V01)



LEFT
2011 Subaru Outback
Insert: Dark Gray Tweed (T33)
Trim: Black Velour (V01)



Tweed

Tweed seat covers add a **timeless, textured look** to any vehicle's interior. Tweed can be used as both insert and trim or paired with other Ruff Tuff fabrics. A popular combination is **Velour** trim with Tweed inserts. (See page 23.)

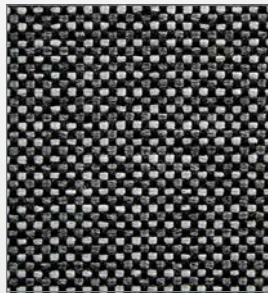
Our tweed fabric is **UV-stable** and **flame-resistant**. Flame-retardant foam padding with a scrim backing offers optimal comfort for you and protection for your seats.



ABOVE
2011 Toyota Tundra
Insert: Light Gray Tweed (T32)
Trim: Medium Gray Sof-Touch (S14)



Black (T01)



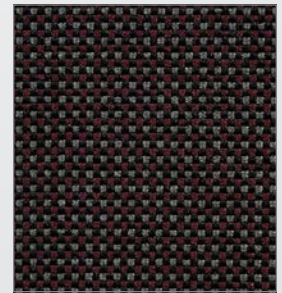
Dark Gray (T33)



Light Gray (T32)



Tan (T12)



Burgundy (T30)



ABOVE
 2018 Ford F-150
 Insert: Burgundy Tweed (T30)
 Trim: Black Carbon Fiber (F01)



LEFT
 2015 Lexus IS 250 Convertible
 Insert: Black Ostrich (E01)
 Trim: Dark Gray Tweed (T33)



Saddle Blanket

Saddle Blanket seat covers are **economical, heavy-duty, sun-resistant, and mildew-resistant**. They feature color-matched thread, tailored corners, double stitching, and reinforced critical seams. The fabric is domestically produced polyester/nylon.

These durable covers can be **hand-washed**, and they're **highly resistant to wear and tear**. We use color-coordinated vinyl for most options, such as headrests, armrests, and console lid covers, and, depending on seat design, for all or part of the trim. Feel free to call us with questions.

The color you select appears in the fabric's stripes, as shown. The rest of the fabric highlights the same color in a blend of multi-colored woven strands.

Saddle Blanket cannot be two-toned or combined with other materials. We make our Saddle Blanket seat covers with no foam backing.



ABOVE
2004 Ford F-250
Gray Saddle Blanket (B14)



Black (B01)



Gray (B14)



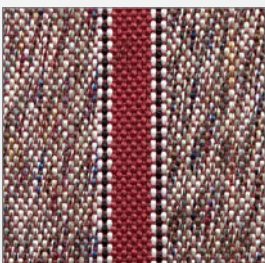
Brown (B04)



Caramel (B02)



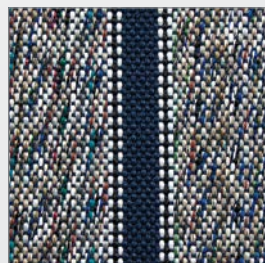
Tan (B12)



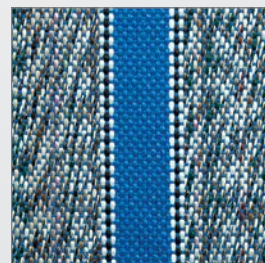
Dark Red (B05)



Red (B11)



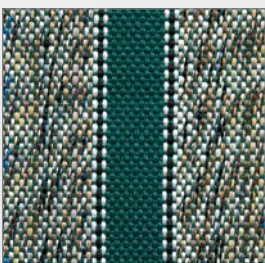
Navy (B03)



Med. Blue (B09)



Light Blue (B08)



Green (B07)



ABOVE
2004 Toyota Tundra
Black Saddle Blanket (B01)



LEFT
2014 Chevy Silverado 2500
Red Saddle Blanket (B11)



UTV Seat Covers

Ruff Tuff's UTV seat covers are made from the **same quality materials** as our seat covers for cars, trucks, and SUVs.

Since UTVs are often exposed to **wet weather** and other **outdoor conditions**, we omit the foam backing featured in most of our other seat covers. This reduces the risk of mildew and **prolongs the life** of the seat cover.

They're **easy to clean** with a damp cloth or in the car wash, so you don't have to worry about having fun in the mud.



ABOVE

2010 Polaris Ranger 500

Insert: Kryptek® Highlander™ (C70)

Trim: Kryptek® Highlander™ (C70)

We make UTV seat covers for most models in these popular makes:

- Arctic Cat
- Bobcat
- Can-Am
- CFMOTO
- Coleman
- Honda
- John Deere
- Kawasaki
- Kubota
- Mahindra
- Polaris
- Textron-Off Road
- Tracker
- Yamaha

We offer UTV seat covers in the following materials:

- Carbon Fiber - pg. 10
- Dura EZ-Care - pg. 18
- Exotics - pg. 4
- Lifestyle Camo - pg. 16
- Outdoor Camo - pg. 14
- Tactical Camo - pg. 12
- Sof-Touch - pg. 8



ABOVE

2012 Kawasaki MULE 4010 Trans

Insert: Bone N Stone™ (C74)

Trim: Bone N Stone™ (C74)



ABOVE

2018 Polaris Ranger

Insert: Silver Gray Dura (D13)

Trim: Kryptek® Raid™ (C72)



LEFT

2020 Polaris Ranger 900

Insert: Mossy Oak®
Break-up Country™ (C59)

Trim: Black Carbon Fiber (F01)

Pistol Pockets shown



Popular Combinations

Red & Black

RIGHT

2014 Chevy Tahoe

Insert: Midnight Croc (E43) - pg. 4

Trim: Flame Croc (E44) - pg. 4

Pistol Pocket Shown



BELOW

2014 Chevy Tahoe

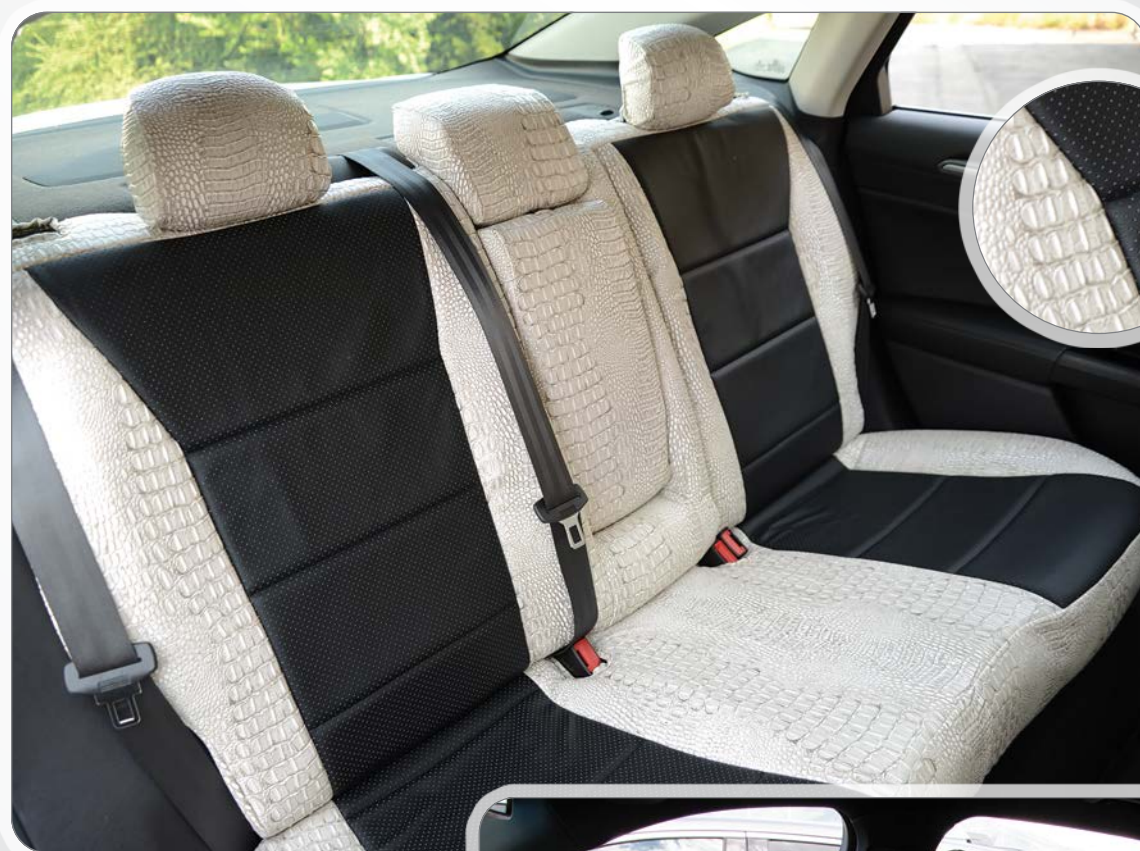
Insert: Diamond Quilted

Red Ostrich (E11) - pg. 4

Trim: Black Ostrich (E01) - pg. 4



Textured Neutrals



**Texture
View**

ABOVE
2016 Ford Fusion
Insert: Black Perforated (L01) - pg. 6
Trim: Bone Croc (E41) - pg. 4

RIGHT
2017 Lincoln MKX
Insert: Black Ostrich (E01) - pg. 4
Trim: Sandstone Ostrich (E35) - pg. 4

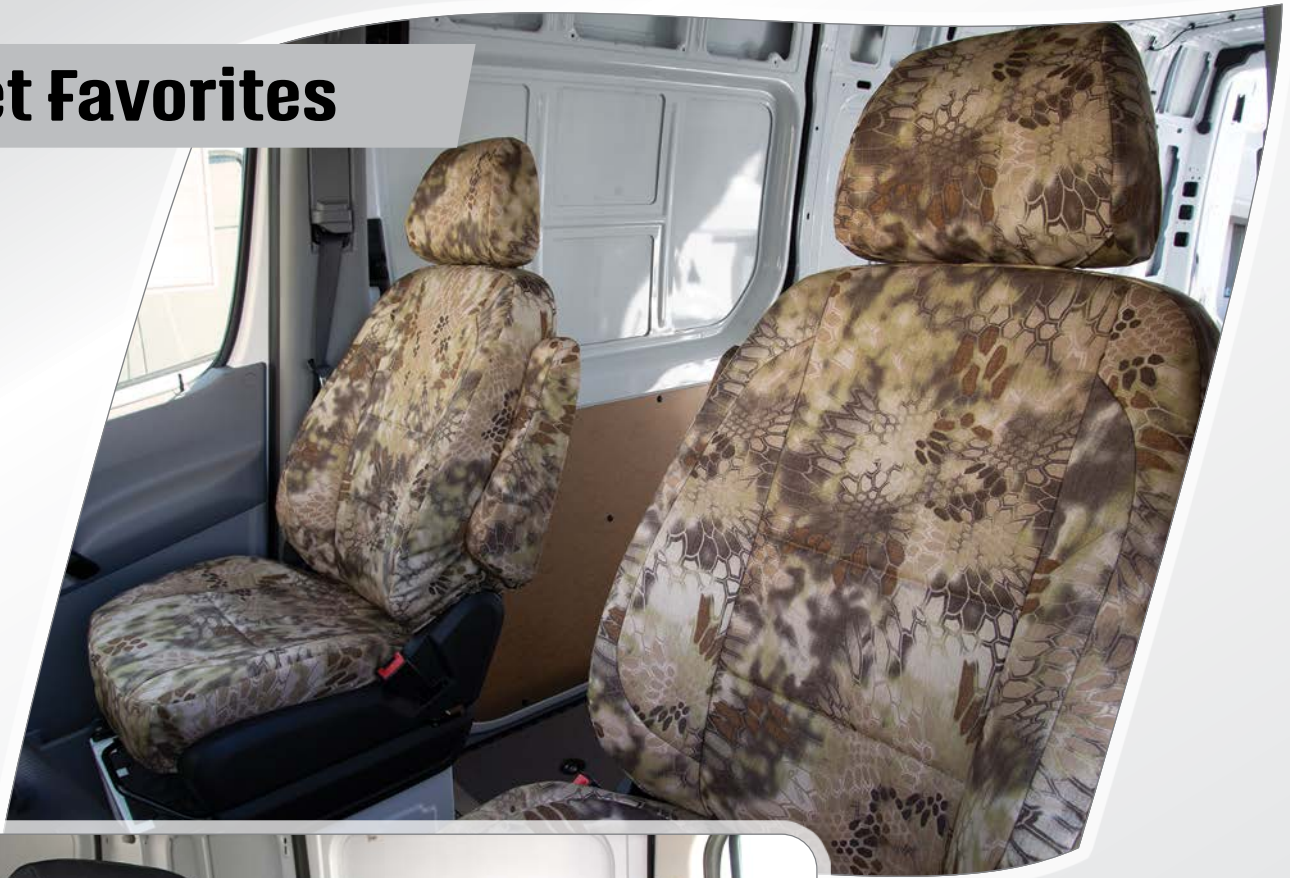


**Texture
View**



Popular Combinations (cont.)

Fleet Favorites



ABOVE

2017 Mercedes Sprinter

Insert: Kryptek® Highlander™ (C70)

Trim: Kryptek® Highlander™ (C70)
- pg. 12



LEFT

2019 Ford Transit Connect

Insert: Black Dura (D01) - pg. 18

Trim: Black Dura (D01) - pg. 18

Simple Sophistication



ABOVE

2018 Acura MDX

Insert: Diamond Quilted

Black Ostrich (E01) - pg. 4

Trim: Black Sof-Touch (S01) - pg. 8



LEFT

2016 Nissan Titan

Insert: Medium Gray Perforated (L14)

- pg. 6

Trim: Medium Gray Sof-Touch (S14)

- pg. 8



Popular Combinations

(cont.)

Camo & Quilting

RIGHT

2014 Dodge Ram

Insert: Diamond Quilted

Charcoal Sof-Touch (S26) - pg. 8

Trim: Kryptek® Raid™ (C72) - pg. 12



ABOVE

2019 Ford F-250

Insert: Diamond Quilted

Flint Carbon Fiber (F16) - pg. 10

Trim: Goldberg Camo™ Bone N Stone™ (C74) - pg. 16

Colorful Character



ABOVE
 2008 Toyota Corolla
 Insert: Sirphis® Undertow® (C53)
 - pg. 16
 Trim: Midnight Croc (E43) - pg. 4



LEFT
 2010-2014 Chevy Tahoe
 Insert: Black Ostrich (E01) - pg. 4
 Trim: Sirphis® Muddy Girl® (C56)
 - pg. 16



Diamond Quilting

Diamond Quilting is an **elegant stitching pattern** we add as an option to the **insert** portion of a Ruff Tuff seat cover. It highlights the fabric's texture and resembles original seats often found in **high-end vehicles**.

The **double foam** we use in Diamond Quilting helps the pattern stand out and **adds comfort**.

Diamond Quilting is available when any of these fabrics is used as an insert: **Sof-Touch, Perforated Sof-Touch, Carbon Fiber, Exotics, Tuff Suede, or Velour**.

Often a Diamond-Quilted insert is paired with **Camo** trim for a rugged but **luxurious look**.



RIGHT
2019 Ford F-250
Insert: Diamond Quilted
Brown Sof-Touch (S04)
Trim: MultiCam® (C79)



ABOVE
 2018 Ford F-250
 Insert: Diamond Quilted
 Black Perforated (L01)
 Trim: Kryptek® Typhon™ (C71)



LEFT
 2014 Chevy Tahoe
 Insert: Diamond Quilted
 Red Ostrich (E11)
 Trim: Black Ostrich (E01)



Special OPS™ Package



The optional Ruff Tuff Special OPS™ (**Outdoor Pocket System**) Package is sewn onto the back of a front row seat cover.

Each side has **two scabbard-style pockets** which open on both ends for **storing long items** like fishing rods, surveying equipment, tools, and firearms. Velcro allows them to be closed on the sides and used as individual pockets.

Each side also has **two conventional pockets** with Velcro flaps, and **three rows of MOLLE loops** to accommodate aftermarket pockets and accessories.

One of our most popular options, the Special OPS™ Package previously was available only on seat covers with **Dura EZ-Care** or **Camo** trim. Now it's also available with **Exotics**, **Sof-Touch**, and **Carbon Fiber** trim.

The Special OPS™ Package is available for front seats in most vehicles, except UTVs. It cannot be combined with optional rear fabric pockets.

Coming Soon: For seats with adjustable headrests, the same package will be available as a separate product, **Flex OPS™ Package**, with no seat cover purchase required. (See page 44.)



Pistol Pockets

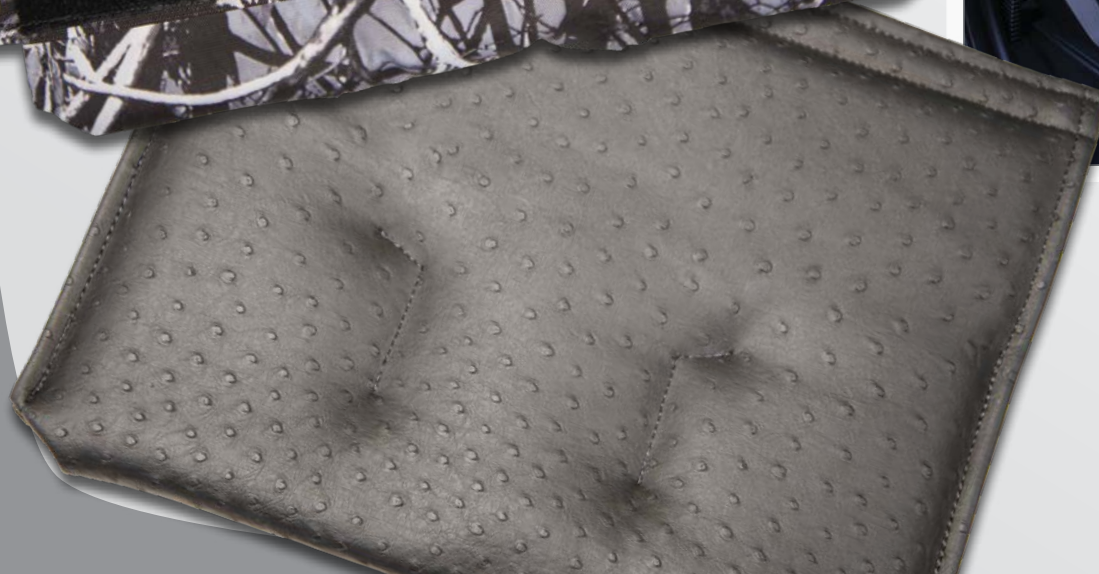
Our pistol pocket holds a **pistol and two magazines**, and works for both left- and right-handed users. The inside is lined with velour and **padded** to protect the weapon.

Pistol pockets attach to the front of seat bottoms with Velcro for **easy removal**. Note that they hang down about 11 inches from the top front edge of the seat bottom. Some cars' front seats are closer than this to the floor. Where this is the case, a pistol pocket will not hang vertically as designed.

Pistol pockets are available for front seats on **driver and passenger sides** (either or both). If you order a pistol pocket for only one side (or only one bucket seat), please specify whether you want it on the driver or passenger side.

A seat with a pistol pocket cannot have a regular front pocket on the same side.

Always obey local, state, and federal gun laws.



Front Pockets

Front pockets are approximately **6 inches deep** for most seats. They are placed on the forward side of the seat bottom.

For bench seats they extend nearly the full width of the seat bottom. They are divided into sections but priced as one front pocket.

For bucket seats and split seats (60/40, 50/50, and 40/20/40), they are approximately 9 inches wide (inside dimension). There can be a front pocket on either the driver or passenger side, or both. Each pocket is counted separately for pricing in this case.

Note that any seat with pistol pockets cannot have a front pocket on the same side.

If you order a pocket for only one side of a seat row or only one bucket seat, *please specify whether you want it on the driver or passenger side.*

If the front of the seat bottom is too shallow for a 6-inch pocket to be sewn on three sides, we create a hanging pocket which is attached only at the top seam (see image to right).



Rear Pockets

Rear pockets are approximately **15 inches deep** and are located on the back of the seat. In most cases the pocket is as wide as the seat back.

A rear pocket for a bench seat runs nearly the full width of the seat and is separated into sections. It is priced as one pocket.

To put a pocket on both bucket seats in a seat row, or each side of a split seat (60/40 or 40/20/40), order two rear pockets.

Please note that rear pockets cannot be combined with our Special OPS™ Package (page 38).

If you order a pocket for only one side of a seat row, or only one bucket seat, *please specify whether you want it on the driver or passenger side.*

Headrest Covers

If your seats have separate, adjustable headrests, **headrest covers are available as an option**, but are not included in the price of the seat cover. Pricing of headrest covers depends on the number of headrests on the seat row.

Some newer vehicles have **active headrests**, a safety feature, with electrical wires running to them, making them non-removable. We can cover active headrests, but they require a different pattern. *Be sure to tell us if you have them.*

If you're not sure whether you have active headrests, look at the back of the headrests. Most active headrests have hard plastic on the back (see image, lower left corner). Feel free to call Ruff Tuff for further help.

In most cases we can cover headrests with a **video display** in the headrest itself (see image below). *Again, be sure to tell us, so we can make the correct cover.*

Methods of attaching headrest covers vary with headrest design. We may use **Velcro** and/or **elastic**, as necessary, to hold the cover firmly in place.

If you remove headrests when installing your seat covers, be sure to replace them for your own safety.



ABOVE

Headrests with a video display require a specially-designed cover.

LEFT

Active headrests typically have a hard plastic back and are non-removable.



Armrest Covers

When ordering a seat cover, you may choose to cover your seat's **small or large armrests**. Small armrests are found on one or both sides of a seat, typically a bucket seat. Large armrests pull out of the backrest or fold down from the center of the seat, and may have storage.



Hard Console Lid Covers



Some vehicles have a hard plastic console **between two bucket seats**. A cover for the hard console lid is usually available as an option.

If you have a 40/20/40 split seat, the center (20) section is part of the seat, not a separate console, and the seat cover price already includes a cover for the lid.



Coming in 2021: Flex OPS™ Package

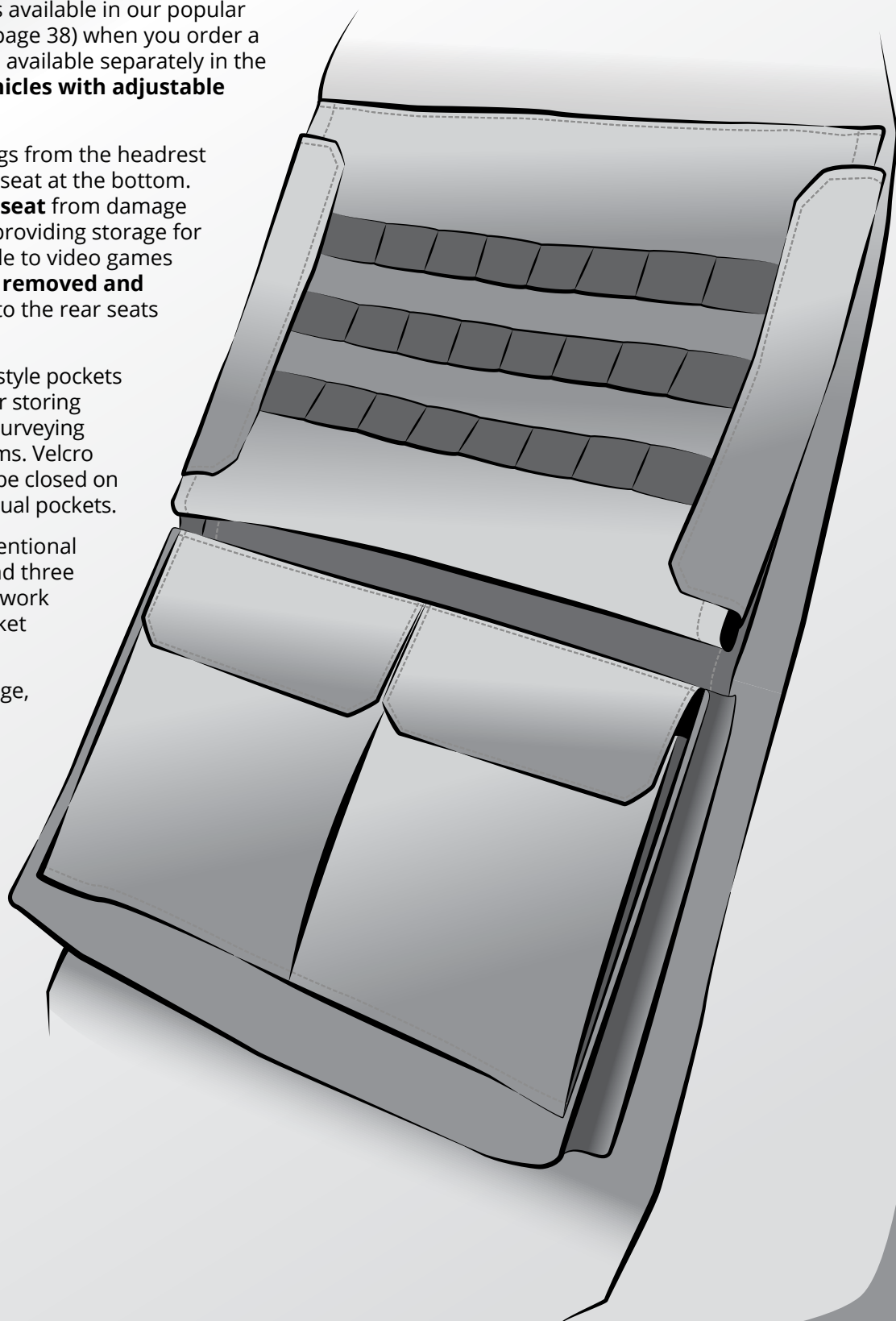
The same pockets and loops available in our popular Special OPS™ Package (see page 38) when you order a front seat cover will soon be available separately in the **Flex OPS™ Package**, for **vehicles with adjustable headrests only**.

The Flex OPS™ Package hangs from the headrest supports and fastens to the seat at the bottom. It **protects the back of the seat** from damage caused by small feet, while providing storage for everything from fishing tackle to video games and baby supplies. It can be **removed and reattached**, even attached to the rear seats in some vehicles.

Each side has two scabbard-style pockets which open on both ends, for storing long items like fishing rods, surveying equipment, tools, and firearms. Velcro flaps allow these pockets to be closed on the sides and used as individual pockets.

Each side also has two conventional pockets with Velcro flaps, and three rows of MOLLE loops which work well with common aftermarket pockets and accessories.

Like the Special OPS™ Package, the Flex OPS™ Package is available in **Dura EZ-Care**, **Camo**, **Exotics**, **Sof-Touch**, and **Carbon Fiber** fabrics.



Ruff Tuff sells three popular products from other manufacturers. For more information about any of these products, please call us.



Dash Covers

Dash covers from **Dash Topper®** protect your dashboard from heat and harmful UV rays. They come in a variety of colors and fabrics.



Wheelskins

A **Wheelskins®** genuine leather steering wheel cover protects your steering wheel. It's a sporty and luxurious upgrade, handcrafted in the USA.



Sheepskin

Genuine sheepskin seat covers by **US Sheepskin** set the standard for plush, breathable comfort. Merino sheepskin is warm in the winter and cool in the summer. Sample swatches are available on request.

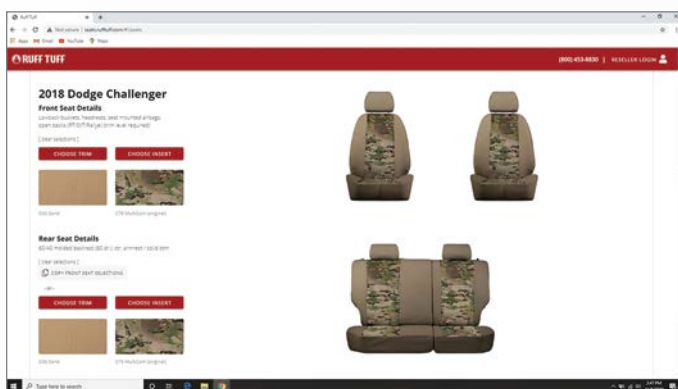


There are three ways to order Ruff Tuff custom seat covers.

Order by Phone

We're always happy to take your order by phone at **800-453-8830**, during regular business hours and most Saturday mornings, and to answer any questions you have in the process. Feel free to ask us about fabrics, colors, patterns, and options to suit your needs and lifestyle. We're happy to help you identify the correct seat styles, etc., for your vehicle.

If you're a reseller, we recommend you place your first few orders by phone, to acquaint yourself with the process and the product, before switching (if you choose) to online ordering.



Order at RuffTuff.com

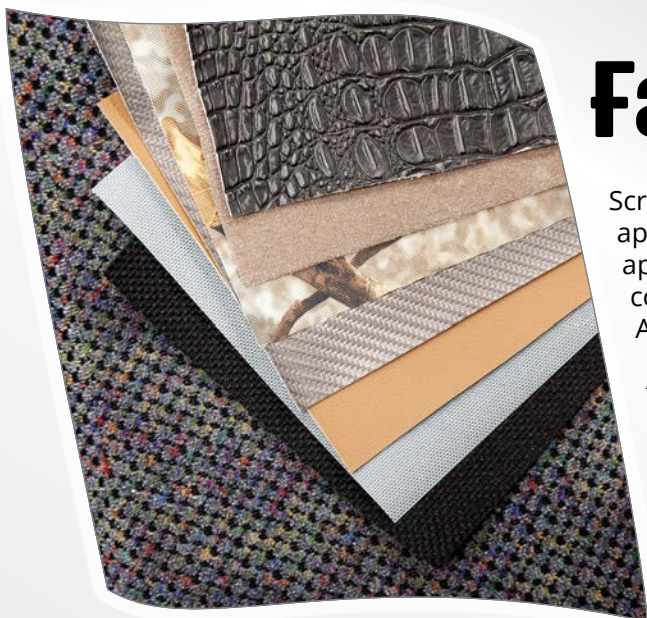
Retail customers and resellers can place orders at our website anytime, day or night. *Note that some orders cannot be placed on the web:* orders for partial seats, steering wheel covers, dash covers, sheepskin, or more than one of the same seat cover.

Resellers receive login credentials for placing orders at the website.

Order Through a Reseller

Retail customers may prefer to order through a local reseller. Some resellers will install seat covers for an additional fee. (Ruff Tuff also offers this service in West Valley City, Utah.) To find resellers in your area, call our customer service representatives or check our reseller list at www.rufftuff.com/reseller-list.





Fabric Swatches

Screen and monitor settings may affect how fabric colors appear online, just as the print process may affect their appearance in print. Tinted windows and external lighting conditions may affect how colors appear in your vehicle. And no image can fully convey a fabric's texture.

As you choose among fabrics and colors, if you want to be sure what you see in this product guide or at RuffTuff.com matches your vehicle, call us at **800-453-8830** or email us at **customerservice@rufftuff.com** to consult our experts and request samples of fabrics you're considering.

Our resellers have a complete set of fabric swatches and can help you choose fabrics and colors or patterns based on your vehicle's colors and your needs and tastes.

Getting Answers to Your Questions

You're welcome to speak with a Ruff Tuff customer service representative at **800-453-8830** for help in identifying your vehicle's exact seat styles, as well as any features which may affect the seat cover's design. (See also pages 48–57.) Resellers can also help with such questions.

We know better than anyone that having so many choices can be complicated. During the business day and at some other times, we're just a phone call, e-mail message, or social media message away.

We have a growing set of online resources to help you, including YouTube videos. Visit us at **www.rufftuff.com/buying-help** for the latest links.

Whether you're a reseller or longtime or prospective customer, consider joining our **Ruff Tuff Custom Seat Covers Users** Group on Facebook. It's a great place to get up-to-date information about new products, see customer photos of seat covers, and ask questions.



Identifying Your Vehicle

In order for Ruff Tuff to use the correct patterns to make your seat covers, we rely on you to identify your vehicle precisely. It starts with year, make, and model.

Model Year

This is the model year of your vehicle, not necessarily the calendar year in which it was manufactured. Often vehicles are manufactured in the year prior to the model year. The best sources are usually your vehicle registration and the original purchase documents, if you bought the vehicle from a dealer. The VIN number is not a reliable indicator; nor is the owner's manual.

Note that auto makers sometimes change vehicle features, including seats, in the middle of a model year. We may ask for photos of your seats — or specific parts of your seats — to insure that we make your seat covers correctly.

If you want a seat cover for a model year not shown on our website, please call. We can often accommodate you.

Make and Model

These are the easy ones; they're on the vehicle itself. The VIN number, owner's manual, vehicle registration, and original purchase documents are also helpful resources.

Trim, Submodel, Cab Type, Body Type, etc.

Our ordering system often needs to know the submodel, trim package, cab type, or other details. If it doesn't specify any of these, they don't affect the seat cover design. Sometimes these are easy to determine — in some cases they're on the vehicle exterior or original purchase documents — but we may need you to send photos. Often it helps to get on the phone with one of our experts and talk through this together while you're with the vehicle.

Original Seat Material (Leather/Cloth/Vinyl)

In some vehicles with optional seat materials, the seats themselves are slightly different, depending on the material. If we need to know the original seat material, we'll ask in the ordering process.

Some synthetic leathers (vinyl) are easily mistaken for genuine leather, and some seats are covered partly in leather, partly in vinyl. A useful rule of thumb is, leather seats tend to come with additional options, such as power seat adjustments. If the seats adjust manually, they're probably vinyl, if vinyl is an option. Again, we're happy to help with any questions, and we may ask for photos.

If your seats have been reupholstered or upgraded with aftermarket leather such as Katzkin®, be sure to tell us. This may affect seat cover design.

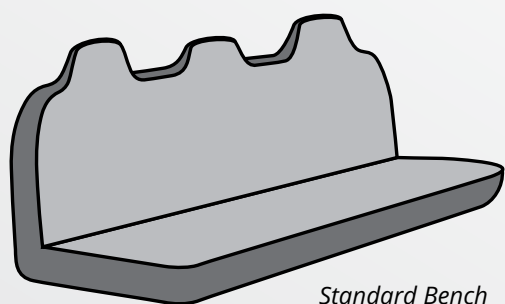
If your seats are not original equipment, please consult with us before ordering. We may or may not be able to cover them.

Types of Seats

Many vehicles come with different seat types, depending on trim package and options. If we're aware of options affecting seat cover design for your vehicle's make, model, and year, we'll ask you to be specific. Seat type also affects seat cover pricing, available options, and installation instructions.

Note that many vehicles have front, rear, and third seats of different types.

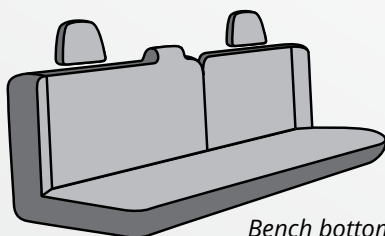
Bench



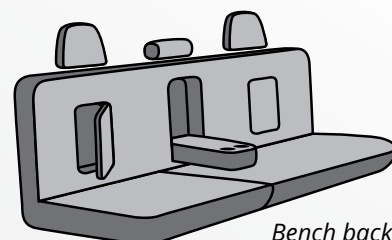
Standard Bench

A **bench** seat extends from one side of the interior to the other, in a single piece for the bottom and a single piece for the back. It allows seating in the middle position. Sometimes the seat bottom will be a bench but the back will be split, or vice versa.

Headrests are common, and bench seats sometimes have a large center armrest, or small armrests at one or both ends.

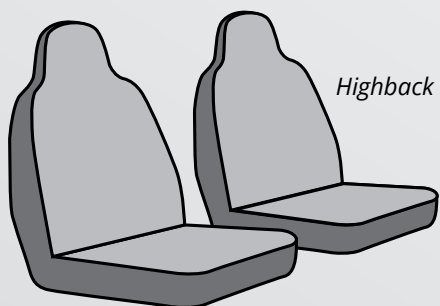


Bench bottom,
split back



Bench back,
split bottom

Bucket



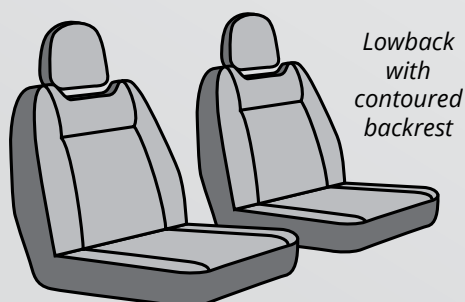
Highback

Bucket seats are separate seats, usually in pairs. Two key distinctions for some models are *lowback* vs. *highback* buckets and with or without contoured backrests (see illustrations), or with more or less contoured sides.

Lowback buckets typically have adjustable headrests; headrest covers are available as an option. *Highback* buckets have built-in, molded headrests, which the seat cover itself will cover.

There's often a hard console with controls and storage between bucket seats, but it's not designed to provide seating (unlike the 20 section of a 40/20/40 seat).

At RuffTuff.com it's possible to order covers only for both bucket seats in a row. If you want to cover only one bucket seat, please call.



Lowback
with
contoured
backrest

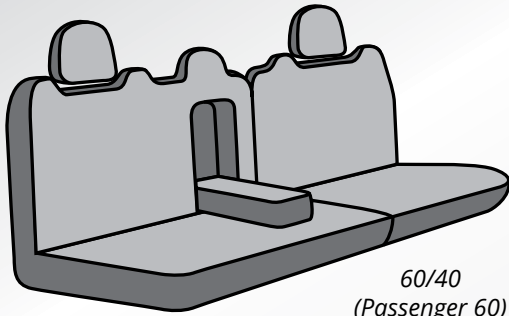
Commercial trucks are often delivered with custom seats, and they may have seats which are not original equipment. To make seat covers in this case, we need to know the seat manufacturer and model, if possible, and we'll likely need photographs.

Seat covers for **captain's chairs** are priced as bucket seats. If they are original equipment, we can usually cover them. We cannot cover aftermarket captain's chairs in custom vans or motorhomes.



Types of Seats (cont.)

60/40



60/40
(Passenger 60)

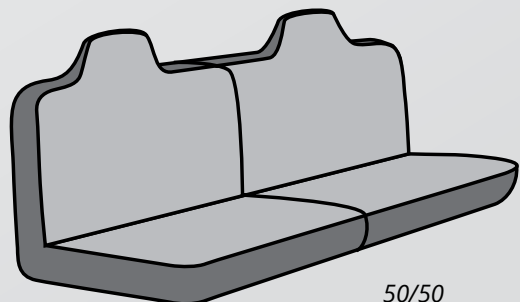
A common type of split seat is the **60/40**. We often need to know whether the 60 section is on the driver or passenger side. (Some retailers use the term 40/60 for one of those options.) A few vehicles have a seat which splits in the center, called a **50/50**.

Note that 60/40 is *approximate*; in some seats the ratio varies, but one side is wider than the other. (Some manufacturers may call it a 70/30.)

60/40 seats may have a large center armrest, small armrests, or both.

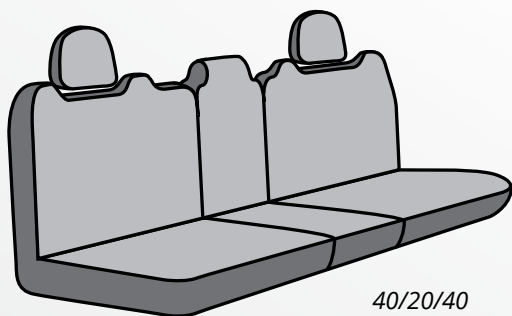


ABOVE: This 60/40 (Driver 60) also has a fold-up bottom with under-seat storage.

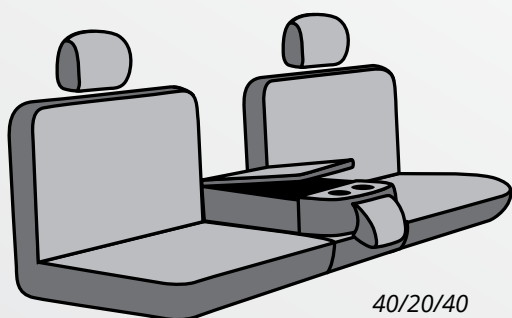


50/50

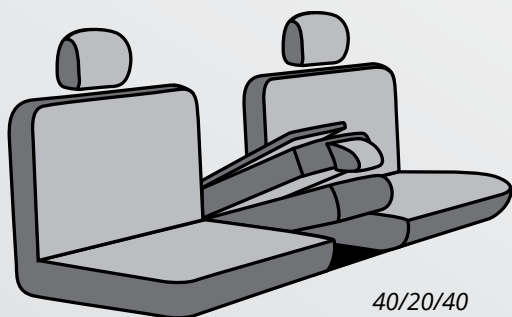
40/20/40



40/20/40
No Storage



40/20/40
Top Storage



40/20/40
Top & Bottom
Storage

The most complicated seat is the **40/20/40**. It has two splits and a center section which can serve as additional seating, and may fold down as an armrest. Rear 40/20/40 seats may have an armrest which folds out when the 20 section backrest is up.

For rear 40/20/40 seats, we cover large armrests as part of the price of the seat cover.

The 20 (center) section usually offers storage, and in some vehicles we need to know details: top storage only, bottom storage only, top and bottom storage, or no storage. If we ask for this information, please check your 20 section carefully. It's common for vehicle owners not to be aware of one of the storage options in their 20 section. For some vehicles, we'll also need to know the number of cupholders.

At RuffTuff.com, only complete 40/20/40 covers are available. If you want to cover just the 20 section or just the 40 sections, please call.



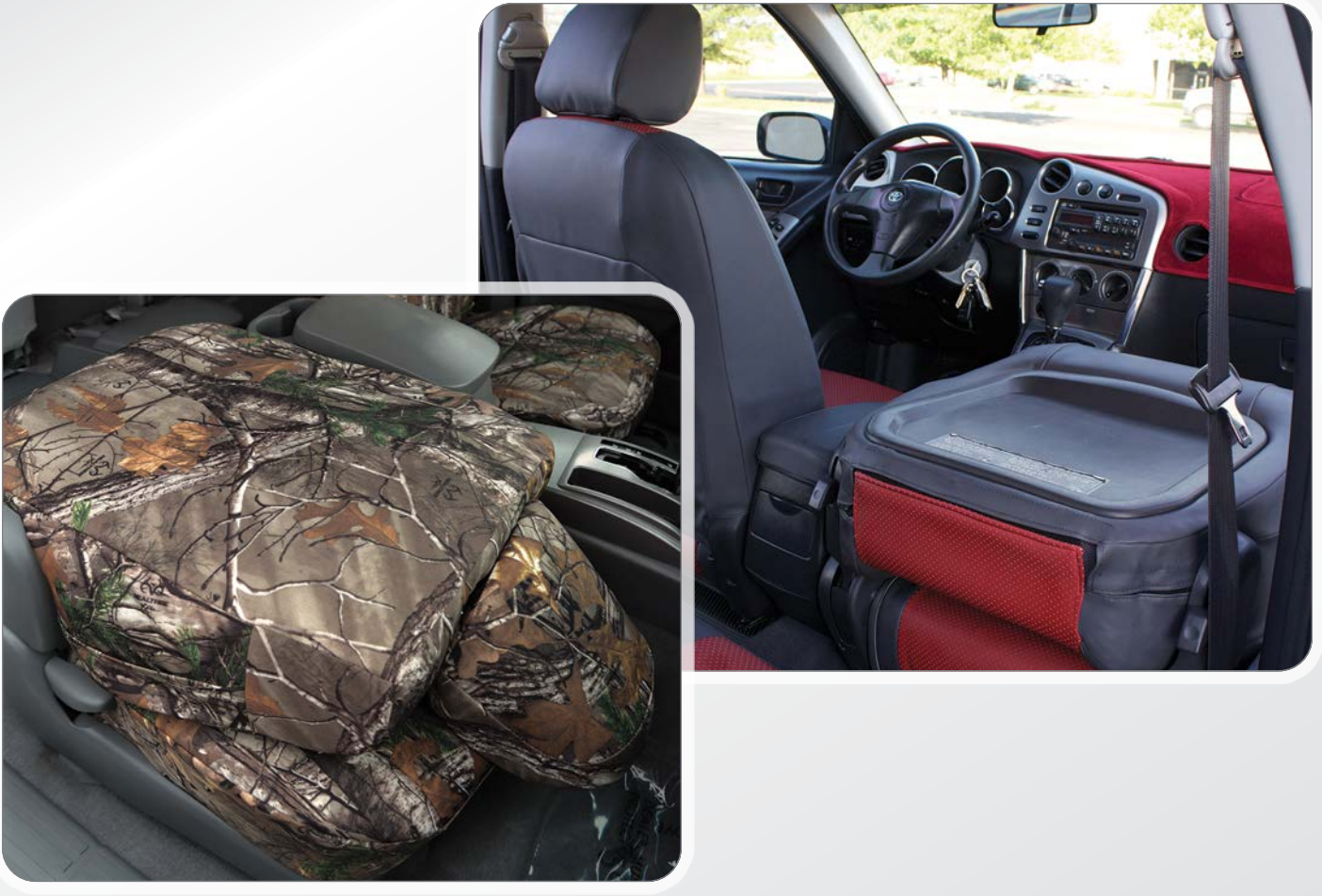
ABOVE: The center section is raised to reveal a *bottom storage* compartment on this 40/20/40 seat.



Types of Seats (cont.)

Fold-Flat

In some vehicles, the front passenger backrest (not the driver backrest) **folds completely flat** toward the dash to serve as a work surface or to accommodate cargo. If we need to know about this feature in your vehicle to make your seat covers correctly, we'll ask.



Other Details

Some vehicles have a **storage compartment** inside the **front passenger seat**, below the seat cushion. This affects seat cover design, so we'll ask, if it applies to your vehicle.

Active headrests also affect seat cover design. See page 41.

If your seats have **leg extenders**, be sure to select the seat variation that includes them.

Insert & Trim

When placing an order, it's important to know some terms. All seat covers (except Saddle Blanket) feature both **insert** and **trim**.

The **insert** is the center panel of the seat back and seat bottom. Its shape will vary depending on the original seat's design.

In some vehicles the insert extends all the way up to the headrest; in others it may end a few inches lower. This cannot be customized. If you have questions or concerns about the pattern for your vehicle, please call us at **800-453-8830**.

Diamond Quilting adds elegance to an insert. It's available as an option if the insert fabric is Sof-Touch, Perforated Sof-Touch, Carbon Fiber, Velour, Tuff Suede, or Exotics (Ostrich or Croc). For Diamond-Quilted inserts we double the foam padding for superior comfort and definition.

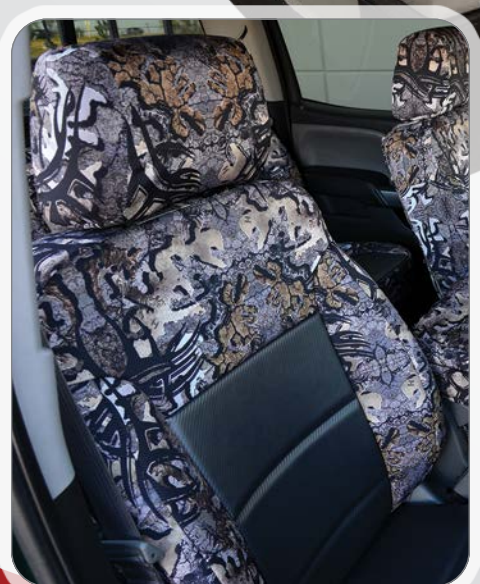
The **trim** is everything that isn't the insert, including the sides, the back, and the edges of the front. Options such as headrests, armrests, front pockets, pistol pockets, rear pockets, and the Special OPS™ Package use the trim fabric you select.



Insert

Trim

Diamond Quilted Insert



The size and placement of the insert depends on the original seat design, which varies from vehicle to vehicle. The insert may end well below the headrest (left) or extend up to the headrest (right and above).

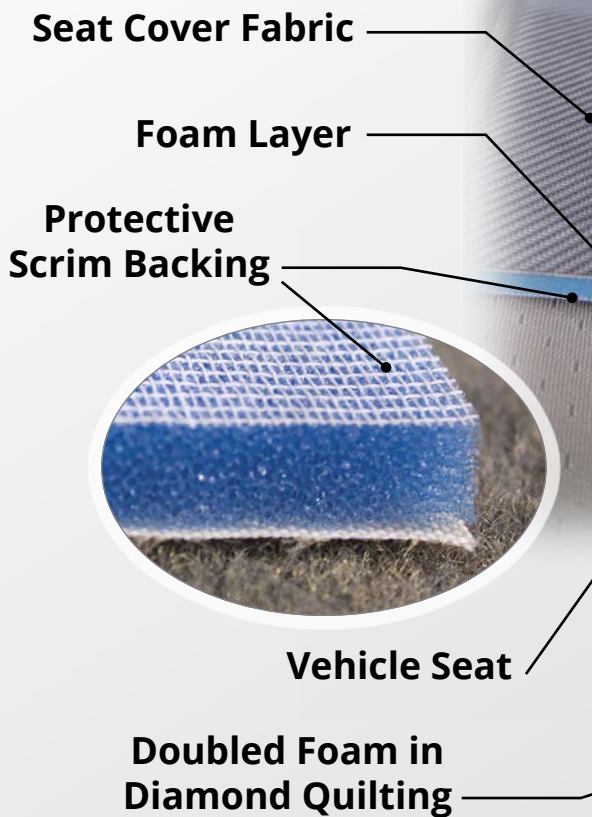


Foam Backing

We back our seat covers with high-quality foam* for comfort, durability, and structure. Our foam is fire retardant and has a scrim backing to minimize wear.

We use foam to pad the **entire seating surface**, both backrest and bottom. (In a few vehicles the 20 section backrest is not padded, due to design constraints.)

When you select Diamond Quilting, we **double the foam** in the insert for additional comfort and definition.





Underseat Coverage

Some vehicles have rear seats that **fold upward** to create additional storage space when not in use. For appearance and to protect the underseat, we cover the bottom of these seats, where possible.



Open Backs

If you see a reference to “open back” in our seat information for your vehicle, it doesn’t mean the seat itself has an open back. It means that, because of the seat design, we design the seat cover with an open back. Rear pockets are not an option with open-back seat covers.



Airbags

Ruff Tuff seat covers accommodate **seat-mounted airbags**, allowing them to deploy normally. This includes seat covers which deploy from the *outside* (door side) of seats, the *inner* side of bucket seats, the *bottom* of front or rear seat cushions, and *rear seat bolsters*.

If seat-mounted airbags were optional for your vehicle's model and year, we make these accommodations whether your vehicle has them or not, for safety. Customers sometimes forget to mention seat-mounted airbags when they order, and in any case seat covers may be resold for use in a vehicle with seat-mounted airbags.

Some **seatbelts** are inflatable and require a different seat cover pattern. *Be sure to tell us if your vehicle has this feature.*

For safety, when you install a seat cover, *be sure not to disconnect or damage any wiring.* Our seat covers are designed to be installed without disconnecting any wiring. You're more than welcome to call us for help at **800-453-8830**, when installing your seat covers.

If you're covering bucket seats, *be sure to put the seat covers on the correct seats*, so that seat-mounted airbag accommodations are properly positioned. These are on the outside (door side) of the seats. Some vehicles have both inside and outside (door side) airbag accommodations on the driver seat.



**Airbag
Accommodation**





Seat Controls

Ruff Tuff seat covers accommodate **manual** and **electric** (power) **seat adjustments**, including **lumbar adjustments**. If your vehicle model has options, we will ask for details. Note that in some vehicles the driver and passenger seats have different controls. We're happy to help you match our seat descriptions to your seat's controls, and we may ask for photos.



Courtesy Lights

Some seats that fold upward include a courtesy light on the underside to illuminate the cargo area. *Please tell us* if your vehicle includes this option.



DVD Systems

Please let us know if your **backrests** or **headrests** have video screens or players installed. We can usually accommodate these, especially if they are original equipment.

Heated & Cooled Seats

Ruff Tuff seat covers affect the performance of heated and cooled seats. In **heated** seats the impact is minimal. In **cooled** (air-conditioned) seats, airflow is restricted, but some of the cooling effect is preserved.



Role of Resellers

Ruff Tuff resellers are an important part of the Ruff Tuff family. We have resellers across the United States and in Canada, ranging in size from small, one-person shops to major national retailers. Some sell multiple brands of seat covers; others offer Ruff Tuff seat covers exclusively. Some of our resellers have been with us for decades.

We offer favorable wholesale pricing. There is no initial financial investment. There is no stock to purchase or inventory to maintain. Each of our seat covers is custom-made to order and can either be drop-shipped directly to your customer or sent to you for pickup or delivery.

Our seat covers lead the industry in fit, because we have the most precise patterns, and in quality of materials and customer service. They're less expensive than leather, but more expensive than other brands' non-leather seat covers. They're ideal for a reseller whose customers expect quality and appreciate products sewn in the USA (every stitch!) by a family-owned company. Ruff Tuff was founded in 1976 and continues to grow.

Ruff Tuff seat covers for cars, trucks, SUVs, and UTVs have a loyal following among commercial, industrial, and government fleets; people who enjoy outdoor sports, including hunting and fishing; pet owners; families with children; people who work out of their vehicles; and anyone who wants to protect the original investment in a vehicle by avoiding wear and tear on the seats.

For major online retailers, we partner with **ConfigureTech** to provide a product configurator which can be added to a reseller website to facilitate online orders.

Some resellers offer seat cover installation for an additional fee.



"We love working with Ruff Tuff. They take pride in their products and customer service. The Ruff Tuff team is constantly striving to improve their products and be a leading, innovative manufacturer. We really enjoy working with a manufacturer that is located in the USA. The Ruff Tuff team has always been great to work with, and we highly recommend them as the manufacturer of America's Finest Custom Seat Covers."

- Niel at **Covers & Camo**, Springville, Utah

"We offer accessories for Jeeps and trucks, as well as installation for the parts we sell. We like using Ruff Tuff because, as many variations as there can be, they always make it simple when we order. Everyone is extremely knowledgeable about the products they sell. They have a wide selection and are always adding more."

- Matt at **Ultimate Truck**, Omaha, Nebraska

"J&R Upholstery is the leading automotive accessories installer for the Southern Tier of New York. We offer everything from electronics to snow plows, bed liners to floor mats, and everything in between. Ruff Tuff seat covers are one of our top-selling products. The quality, fit, color, and fabric choices make them an excellent offering in our automotive interior product line. Ordering with Ruff Tuff is always fast and easy with their experienced customer service representatives. Ruff Tuff seat covers are one of J&R Upholstery's 'go to' product lines, and always will be."

- Tom at **J&R Upholstery**, Binghamton, New York

"We like selling Ruff Tuff because it is a fantastic product and is very customizable with an excellent fit. Here at Top A Truck we specialize in outfitting cars, trucks, vans and SUVs."

- Jacob at **Top A Truck** in East Bethel, Minnesota



Becoming a Reseller

A reseller application is available online at <https://www.rufftuff.com/become-a-reseller>.

Please carefully provide all the information requested; we cannot approve incomplete or inaccurate applications.

The application asks for your **federal tax ID number**.

For resellers in Utah, we ask for your Utah Tax Exemption Number, and we're legally required to keep a print or electronic copy of your Utah Sales Tax Exemption Certificate on file. (We'll request that copy when we process your application.)

Once your application is processed and approved, we'll send you a **product guide**; a **full-color, two-sided sign** to place on your counter; a **set of fabric swatches**; and other helpful materials.

As you await approval of your application (usually only a few days), you can access an electronic copy of our current product guide for download from the **About Us** page at **RuffTuff.com**.

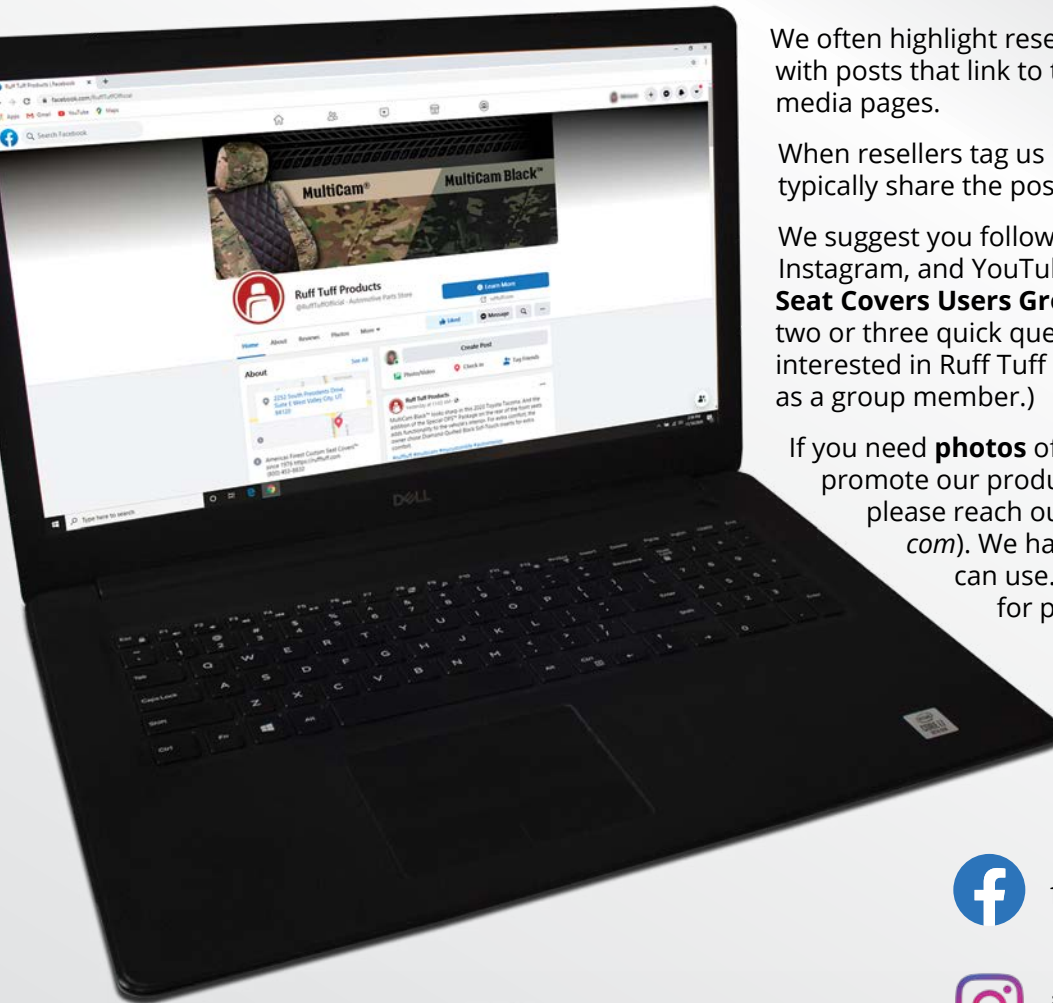


Tips for Resellers

- 1 **Before placing your first order**, please call our office at **800-453-8830**. We'll take your credit card information and give you a username and password for the reseller portion of our website. There you can see wholesale prices and MSRP, and place orders for your customers.
- 2 We recommend you **place your first few orders by phone**. Our customer service team is happy to walk you through the ordering process, answering any questions you may have, to ensure that order information is accurate and complete.
- 3 To let your customers know you offer Ruff Tuff custom seat covers, **keep our sign visible** on your counter and put our **window cling** on or near your front door.
- 4 **Have the product guide on hand** for customer reference, and **show the fabric swatches** to help customers envision how our seat covers will look and feel in their vehicle.
- 5 Nothing sells Ruff Tuff seat covers like having them in a **vehicle your customers can see** — but a close second is having real, full-size seats with real seat covers. Call us about below-wholesale pricing on seat covers for your own vehicle or actual seats in your showroom.
We also offer smaller **display seats**.
- 6 Follow Ruff Tuff Products on **Facebook, Instagram, or YouTube**. Join the Ruff Tuff Custom Seat Covers **Users Group** on Facebook. It's a great place to ask questions, post photos of seat covers you've installed, learn about new products, and get to know Ruff Tuff.
- 7 Be sure Ruff Tuff has **names and email addresses** for anyone in your shop who should keep up on new options, fabrics, etc. — or make sure whoever receives Ruff Tuff communications shares them with everyone involved.
- 8 Many resellers offer seat cover **installation** at an additional fee. If you're interested in offering this service, feel free to call our office to discuss details. Installation videos are available on our YouTube channel.
- 9 When speaking with customers, be sure to tell them that since our high-end seat covers are custom-made, **orders take a few weeks to arrive**. Depending on the season and our backlog, turnaround varies from two to five weeks, approximately.
We're happy to tell you at any time how long to expect, and to update you on the status of any order. If new patterns must be made, or if we have to wait for needed information or photos from the customer, delays are possible.
In October or November of each year, we announce in advance the **last day to order seat covers for delivery before Christmas**. Then our elves work overtime, if necessary, to ship Christmas orders on time.



Resellers & Social Media



We often highlight resellers on **Facebook** and **Instagram** with posts that link to the reseller's webpage and social media pages.

When resellers tag us in posts about orders or installs, we typically share the posts, to reach a larger audience.

We suggest you follow **Ruff Tuff Products** on Facebook, Instagram, and YouTube, and join the **Ruff Tuff Custom Seat Covers Users Group** on Facebook. (We'll ask you two or three quick questions to make sure you're really interested in Ruff Tuff seat covers before we approve you as a group member.)

If you need **photos** of Ruff Tuff custom seat covers to promote our product or your business on social media, please reach out via e-mail (customerservice@rufftuff.com). We have a growing gallery of images you can use. If you need high-resolution photos for printed materials, please let us know.



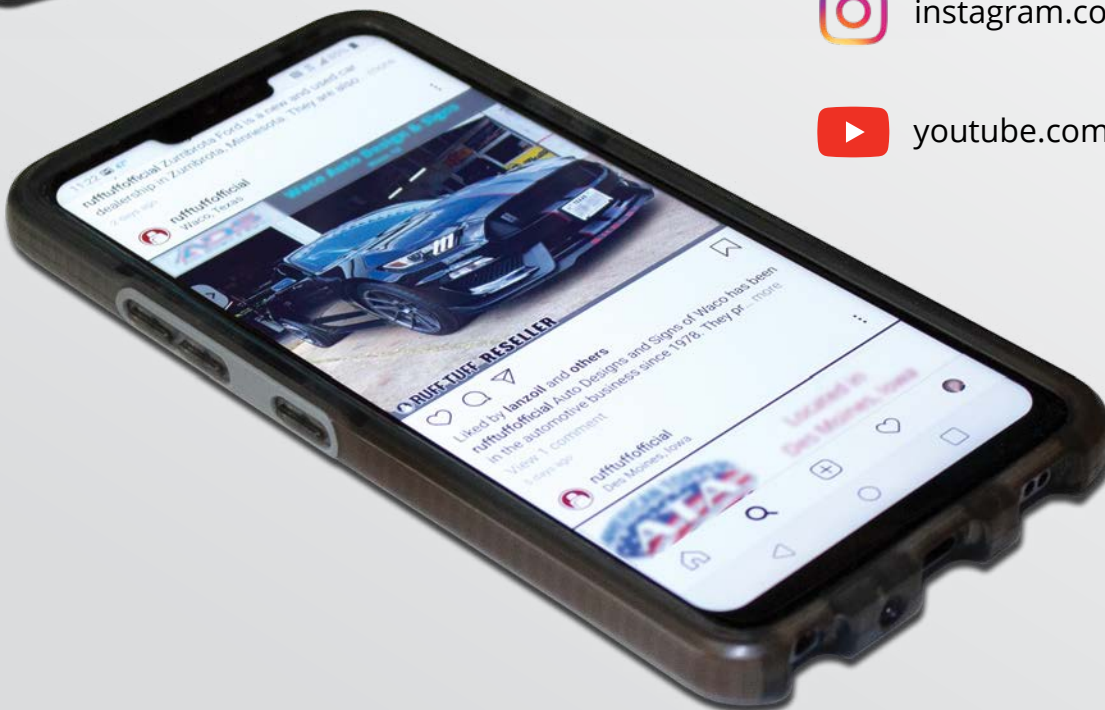
fb.com/RuffTuffOfficial



instagram.com/RuffTuffOfficial



youtube.com/RuffTuffProducts



What's in the Box?

In the box you'll find:

- Your **seat covers**, wrapped in clear plastic. If you ordered more than one row, the rows are wrapped separately and labeled. Some parts of the seat covers are individually labeled to avoid confusion.
- Printed **installation instructions**. You may also want to check our YouTube channel's growing collection of installation videos at www.youtube.com/RuffTuffProducts.
- A **fiber stick** you may need during installation, to poke the edges of covers under fittings on your seats or center console.

Be careful not to cut through the box when opening it. You may damage your seat covers.



Installation

The time and effort required to install Ruff Tuff seat covers varies by seat and vehicle, and our precise fit may require some patience. We send installation instructions and a helpful tool with each seat cover we ship, and we're happy to answer questions that arise while you're installing them.

Our seat covers are designed to be installed **without disconnecting wiring**, and most are designed for installation **without removing the seats**. Some rear seats may need to be removed for seat cover installation.

We suggest **laying out all the pieces**, one row at a time — perhaps on the seats themselves — to get an initial sense of where they go. Where two pieces are similar enough that they could be confused, we label the pieces.

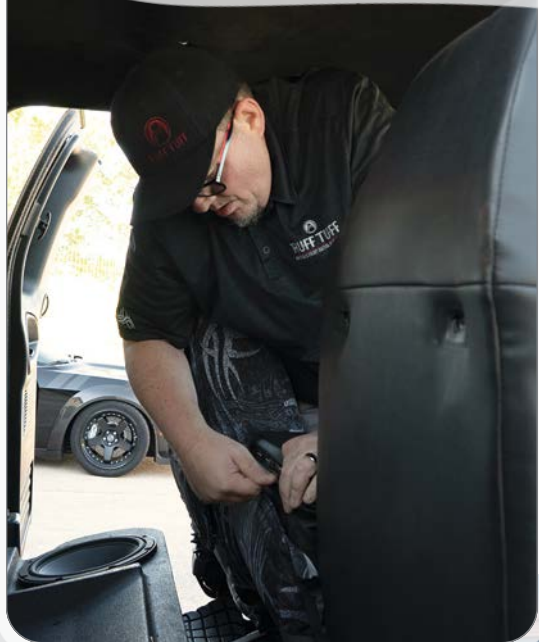
If anything is unclear or just doesn't fit, *please call or email us*. We'll be happy to help.

Our **YouTube** channel has a growing collection of videos to help with installation. Go to YouTube directly or via www.rufftuff.com/video.

Ruff Tuff installs seat covers for an additional fee at our factory in West Valley City, Utah (Salt Lake City area). Many of our resellers provide the same service at their locations.



youtube.com/RuffTuffProducts



Before (Left): Original Seats
After (Right): Bone Croc (E41) - pg. 4



Shipping

Standard shipping is currently by FedEx Ground to the contiguous US and Canada, and via the US Postal Service to Alaska and Hawaii.

Ruff Tuff custom seat covers are made after the order is placed. Shipping times vary, and orders lacking complete information may be delayed. Call for details.

We may request photos of seats to help us select the proper pattern. *Resellers may wish to take photos when the customer places the order*, in case they're needed. Delays in obtaining photos or needed information will delay shipping and delivery.

Terms of Sale

Prices and product offerings are subject to change without notice.

Warranty

Ruff Tuff warrants its products against defects in workmanship and material for one (1) year from the shipping date. While we use high-quality fabrics which resist fading better than most, Ruff Tuff does not warrant against color change or fading.

This warranty is limited to repair or replacement only. Ruff Tuff's liability shall not exceed the replacement or repair cost of the merchandise. The product may be repaired or replaced at Ruff Tuff's discretion.

Return Policy

Items may be returned during the first 90 days after shipment, in case of factory defect or other error by Ruff Tuff. Because each seat cover is custom made, in cases of customer ordering errors, credit or partial credit will be offered on a case-by-case basis. At Ruff Tuff's discretion returned orders with unusual color combinations or for rare or old vehicles may be given no credit.

Prior to returning an item, the customer must call Ruff Tuff at **800-453-8830** for a **Returned Goods Number** (RG#) and instructions.

Fleet Accounts

Ruff Tuff welcomes fleet accounts. Please call for further information, including fleet pricing.



Goldberg Camo™ pg. 16





RUFF TUFF®

2252 S Presidents Dr, Suite E
West Valley City, UT 84120

Toll Free: 800-453-8830

Local: 801-972-5845

Fax: 801-973-7513

WWW.RUFFTUFF.COM

EVERY STITCH SEWN IN THE USA

